

Mighty Cam 3.0

USB 6 Megapixel Sensor & Imaging Software

6 Megapixel
Sensor

Stunning High-
Resolution

USB 3.0
Output

Minimal Lag
Time

Save & Share
Images

Imaging
Software



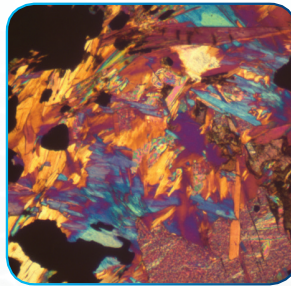
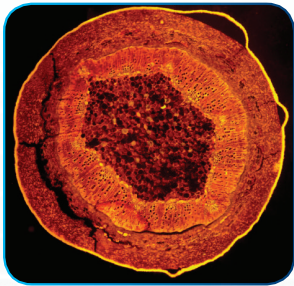
Professional Sony 6M
CMOS Sensor



Easy Plug-and-Play USB
3.0 Output

Universal
c-mount

Shown on
an Aven
Stereo Zoom
Microscope



Inspect from your Computer in Real Time

Introducing Aven's Mighty Cam USB 6M CMOS Camera with imaging and measurement software. Create stunning images with outstanding clarity then measure, annotate and analyze easily with Mosaic 2.0. The Mighty Cam is equipped with a 6 megapixel sensor and a USB 3.0 output, providing stunning, true-to-life images with minimal lag time.

- 6 megapixel sensor
- Universal c-mount lens
- USB 3.0 output for stunning images at minimal lag time
- Imaging and measurement software to save, share, and manipulate images

MIGHTY CAM 3.0 USB CAMERA W/ IMAGING SOFTWARE

| | |
|----------------------|---|
| SKU | 26100-244 |
| SENSOR | CMOS, 1/1.8" |
| PIXEL SIZE | 2.4 x 2.4(µm) |
| RESOLUTION | 3072(H) x 2048(V) |
| FRAME RATE | 40fps @6MP |
| SHUTTER MODE | Global |
| CONFIGURATION | CPU: Intel Core i5 or better (Quad or more Core), RAM: 8G or more, OS: Windows 7/8/10 64bit |
| WEIGHT | 330g |
| PRICE | \$749.00 |

Mighty Cam 3.0

Mac and PC Imaging Software

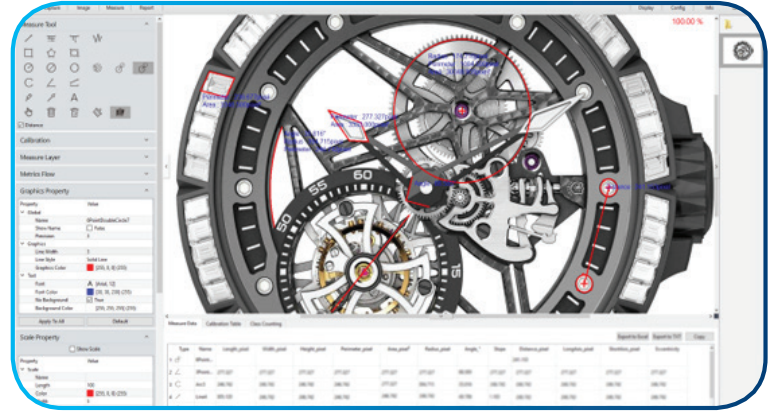
Save & Share
Images
Record
Video

Advanced
Settings
Adjust Depth
of Field

Panoramic
Images
Real Time
Stitching

Measure, Annotate, Record Video

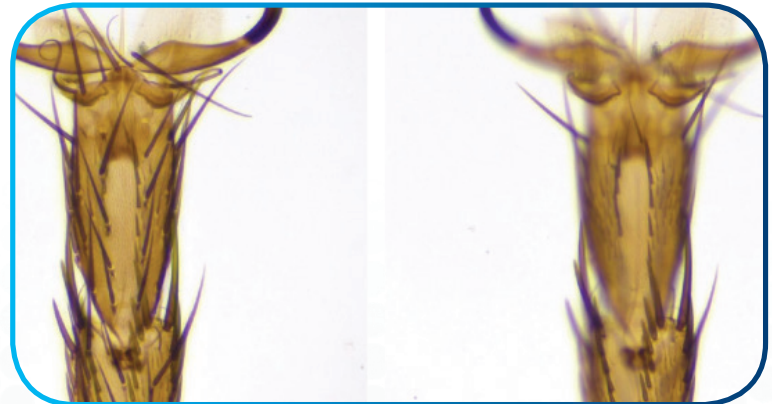
Adjust, annotate, and capture images to share. Records video and measures shapes instantaneously. Auto settings include color scale and white balance, manual settings include gain, noise reduction, gamma, and flat field correction.



Measure shapes and capture images and video

Adjust Depth of Field

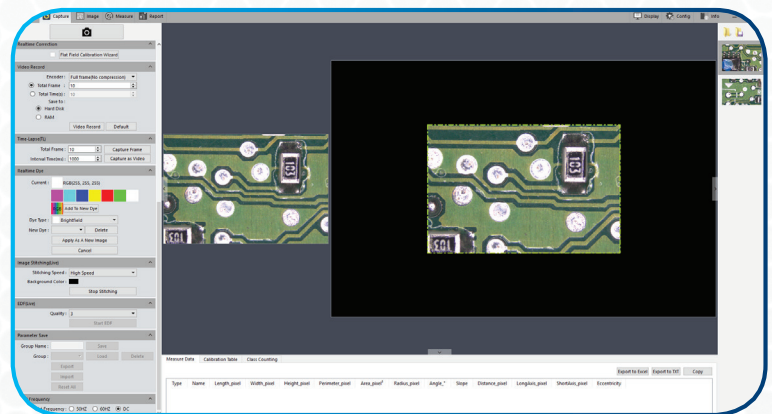
The imaging and measurement software is equipped with real-time depth of field fusion. By adjusting the focus ring, different depth of field points are captured while generating clear depth of field images.



Adjust the depth of field in real time

Real-Time Image Stitching

The “real time stitching” function generates large-sized mosaic images in seconds by moving the subject under the lens.



A 160 megapixel panoramic image obtained through real time stitching

IMAGING SOFTWARE

| | |
|----------------------|---|
| CONFIGURATION | CPU: Intel Core i5 or better (Quad or more Core), RAM: 8G or more, OS: Windows 7/8/10 64bit |
| SETTINGS | Auto: color scale, white balance Manual: gain, noise reduction, gamma, flat field correction |