



Tools for  
Advancing  
Innovation

Built-In  
Measurement  
Software  
**Mosaic 2.1**

HDMI, USB  
and SD Card  
Outputs  
Capture & Save  
Images Directly  
To SD Card

Auto Focus  
**FULL HD  
1080p**

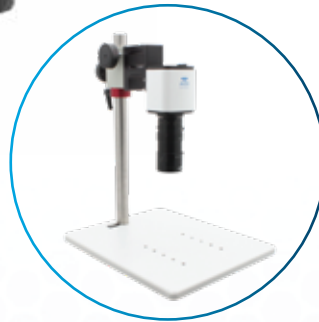
**60fps  
HDMI**  
**30fps  
SD Card, PC  
and USB**



# Mighty Cam Pro

## Auto Focus HDMI/USB/SD

Aven's Mighty Cam Pro is an all-in-one inspection auto-focus camera. This camera offers both USB and HDMI outputs for inspection from an HD monitor or your PC via the included Mosaic software. This camera features integrated measurement capabilities for measuring without a PC. This camera also features a built-in SD card port for capturing instant high resolution images with no need for a PC.



Macro Lens



Micro Lens



### Mighty Cam Pro Features:

- Camera offers both continuous and single-shot auto focus modes.
- Data transfer up to 60 frames per second
- HDMI, USB2.0 and SD card outlets
- Save images directly to SD card \*no computer required\*
- Includes software Mosaic 2.1
- Attachable lenses available for purchase
- Attachment on back of camera to easily attach to N-Mount
- Real time image stitching
- Perfect color reproduction
- Professional digital image measurement software system

## Mosaic 2.1

### Imaging Software

Flip over to read more about this software



Mighty Cam Pro	
Item Number	26100-258
PC Software	Mosaic 2.1
Resolution	2MP 1920x1080
Frame Rate	60 fps @HDMI, 30fps @USB2.0
Video Recording	30fps @SD Card, 30 fps @PC
Outputs	HDMI, USB2.0 and SD Card
Package Contents	Mighty Cam Pro, power supply, a USB Mouse and an SD Card

# Mosaic 2.1

## Imaging Software

### Mosaic Software

Compatible with Mosaic V2.1 Computational Imaging Software. Fast, efficient and worry-free the core design concept of Mosaic V2.1 software. It adopts a new image "shooting-processing-measurement-reporting" function, modular design, and integrates various intelligent image processing algorithms. It is dedicated to providing users with more simple operation modes and improve work efficiency in all circumstances.

### Professional Digital Image Measurement System

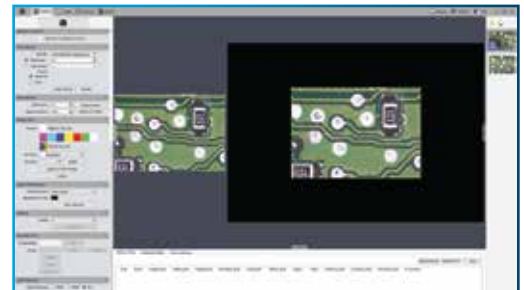
Mighty Cam Pro provides extremely powerful measurement functionalities including, freehand line, rectangle, polygon, circle, bi-circle, angle, point-line distance and much more. Three different length units of millimeter, centimeter, and micrometer are provided to meet various measurement requirements in different applications.

### Real-Time Image Stitching

It can generate large-sized mosaic images in a few seconds while moving the stage, which is light, smooth and worry-free! Real-time depth-of-field fusion.

### Perfect Color Reproduction

Aven's color processing is capable of a new level of precision, matches the monitor image to the eyepiece view, produces extremely-high color definition.



## Mighty Cam System Bundles AVEN Offers




Mighty Cam Pro  
on Ultra Glide Stand  
#258-181-556-PRO  
Monitor, computer macro lens, and  
gooseneck LED light included



Mighty Cam Pro  
on Post Stand  
#258-181-576-PRO  
Monitor, computer macro lens,  
and gooseneck LED light included



Mighty Cam Pro  
w/ Stereo Microscope  
#DSZV-44-258-512-PRO  
#SPZV-50-258-512-PRO  
#SPZHT-135-258-512-PRO  
Various Stereo Zoom Systems on PLED  
Stands with monitor included on all



Mighty Cam Pro  
on Post Stand  
#26700-109-PRO  
Monitor, Aven micro lens, additional  
.5x lens and LED ring light included