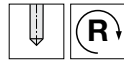




Spiral flute taps for UNF threads

Series no. **4653**

Material	Material examples	Suitability
<b>P</b>	Steel	●
<b>M</b>	Stainless steel	●
<b>K</b>	Cast iron	○
<b>N</b>	Aluminum	○
<b>S</b>	Ni / Ti alloys	○
<b>H</b>	Hardened steel	
●=Optimal ○=Secondary		



Tool material **HSS-E**

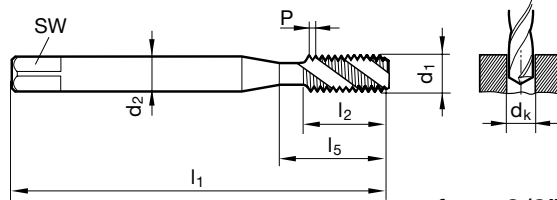
Tolerance on Ø 2BX

Coating Slidur

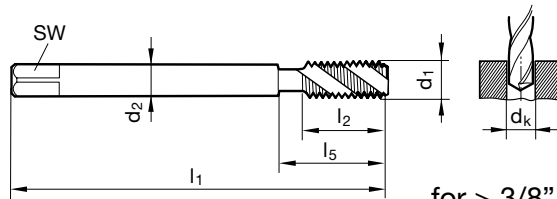
Flute type VA R45

Chamfer form C (2-3)

Internal cooling N/A



for ≤ 3/8"



for > 3/8"



DIN length,  
ANSI shank

d1 - P	H	dk in	No. of	d2	SW	l1	l5	Code no.	EDP Number
	limits	range	flutes	in	in	in	in		
2-64	H3/H4	0.069 - 0.075	3	0.141	0.110	1.969	0.631	2.184	9046530021840
3-56	H3/H4	0.080 - 0.086	3	0.141	0.110	2.205	0.631	2.515	9046530025150
4-48	H3/H4	0.089 - 0.097	3	0.141	0.110	2.205	0.709	2.845	9046530028450
5-44	H3/H4	0.100 - 0.108	3	0.141	0.110	2.205	0.709	3.175	9046530031750
6-40	H3/H4	0.111 - 0.119	3	0.141	0.110	2.205	0.709	3.505	9046530035050
8-36	H3/H4	0.134 - 0.142	3	0.168	0.131	2.480	0.827	4.166	9046530041660
10-32	H4/H5	0.156 - 0.164	3	0.194	0.152	2.756	0.945	4.826	9046530048260
12-28	H4/H5	0.177 - 0.186	3	0.220	0.165	3.150	1.024	5.486	9046530054860
1/4-28	H4/H5	0.211 - 0.220	3	0.255	0.191	3.150	1.181	6.350	9046530063500
5/16-24	H4/H5	0.267 - 0.277	3	0.318	0.238	3.543	1.377	7.938	9046530079380
3/8-24	H4/H5	0.330 - 0.340	4	0.381	0.286	3.543	1.456	9.525	9046530095250
7/16-20	H5/H6	0.383 - 0.395	4	0.323	0.242	3.937	N/A	11.113	9046530111130
1/2-20	H5/H6	0.446 - 0.457	4	0.367	0.275	3.937	N/A	12.700	9046530127000
9/16-18	H5/H6	0.502 - 0.515	4	0.429	0.322	3.937	N/A	14.288	9046530142880
5/8-18	H5/H6	0.565 - 0.578	4	0.480	0.360	3.937	N/A	15.875	9046530158750
3/4-16	H6/H7	0.682 - 0.696	4	0.590	0.442	4.331	N/A	19.050	9046530190500