

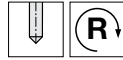


Spiral flute taps for UNC threads

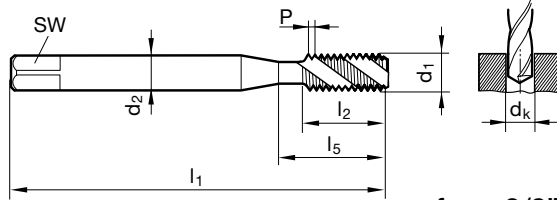
Series no.

4654

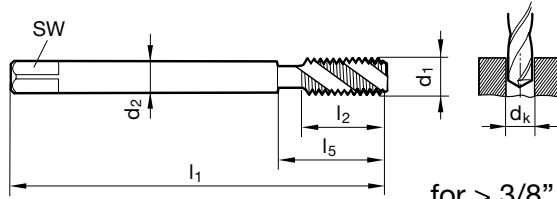
Material	Material examples	Suitability
P	Steel	●
M	Stainless steel	●
K	Cast iron	○
N	Aluminum	○
S	Ni / Ti alloys	○
H	Hardened steel	
●=Optimal ○=Secondary		



Tool material	HSS-E
Tolerance on Ø	2BX
Coating	Slidur
Flute type	VA R45
Chamfer form	E (1.5-2)
Internal cooling	N/A



for ≤ 3/8"



for > 3/8"



DIN length,
ANSI shank

d1 - P	H	dk in	No. of	d2	SW	l1	l5	Code no.	EDP Number
	limits	range	flutes	in	in	in	in		
2-56	H3/H4	0.067 - 0.074	3	0.141	0.110	1.969	0.631	2.184	9046540021840
3-48	H3/H4	0.076 - 0.084	3	0.141	0.110	2.205	0.631	2.515	9046540025150
4-40	H3/H4	0.085 - 0.094	3	0.141	0.110	2.205	0.709	2.845	9046540028450
5-40	H3/H4	0.098 - 0.106	3	0.141	0.110	2.205	0.709	3.175	9046540031750
6-32	H4/H5	0.104 - 0.114	3	0.141	0.110	2.205	0.709	3.505	9046540035050
8-32	H4/H5	0.130 - 0.139	3	0.168	0.131	2.480	0.827	4.166	9046540041660
10-24	H4/H5	0.145 - 0.155	3	0.194	0.152	2.756	0.945	4.826	9046540048260
12-24	H4/H5	0.171 - 0.181	3	0.220	0.165	3.150	1.024	5.486	9046540054860
1/4-20	H5/H6	0.196 - 0.207	3	0.255	0.191	3.150	1.181	6.350	9046540063500
5/16-18	H5/H6	0.252 - 0.265	3	0.318	0.238	3.543	1.377	7.938	9046540079380
3/8-16	H6/H7	0.307 - 0.321	4	0.381	0.286	3.937	1.456	9.525	9046540095250
7/16-14	H6/H7	0.360 - 0.376	4	0.323	0.242	3.937	N/A	11.113	9046540111130
1/2-13	H6/H7	0.417 - 0.434	4	0.367	0.275	4.331	N/A	12.700	9046540127000
9/16-12	H6/H7	0.472 - 0.490	4	0.429	0.322	4.331	N/A	14.288	9046540142880
5/8-11	H6/H7	0.527 - 0.546	4	0.480	0.360	4.331	N/A	15.875	9046540158750
3/4-10	H6/H7	0.642 - 0.663	4	0.590	0.442	4.921	N/A	19.050	9046540190500