

Tork Hand Towel Roll Dispenser (Electronic, Touch- Free):
 H21 System: 86ECO (Smoke)



Roll Towel Product Options:

- RB350A (Tork Advanced, 350', White)
- RB600 (Tork Advanced, 600', White)
- RB800 (Tork Advanced, 800', White)
- RB351 (Tork Universal, 350', White)
- RB6002 (Tork Universal, 600', White)
- RB8002 (Tork Universal, 800', White)
- RB8004 (Tork Universal, 800', White)
- RB10002 (Tork Universal, 1000', White)
- RK350A (Tork Universal, 350', Natural)
- RK600E (Tork Universal, 600', Natural)
- RK800E (Tork Universal, 800', Natural)
- RK8002 (Tork Universal, 800', Natural)
- RK1000 (Tork Universal, 1000', Natural)
- 214250 (Tork Universal, 425', Natural White)
- 214404 (Tork Advanced, 1,000', White)
- 214650 (Tork Universal, 425' White)
- 218004 (Tork Universal, 800', Natural White)

Specifications

Dispenser Size	Outer Case Size	SCC Code	Case Weight	Case Cube	Pallet Configuration (ti x hi)
11.78" X 9.12" X 14.39"	12.75 x 10.75 x 14.5	10073286622461	4.1	1.15	9 x 9 = 81 units

Dispenser Parts



Part Description	Replacement SKU
LOCK FINGERS	LOCKINSERT
LEFT HUB ARM	
RIGHT HUB ARM	
86ECO COVER	86ECO COVER
BUSINESS CARD HOLDER #14 DISP KEY AND LOCK FINGERS	#14 KEY





Part Description with Replacement Instructions

Parts with SKUs listed are available for order from as of the revision date on the manual. Contact an Essity Sales Rep or the Essity Quality Coordinator to order these parts.

If no SKU is listed, the availability of the part is unknown. Please contact the Essity Quality Coordinator for more information (see Contacting Essity section).

Replacement SKU Description & Replacement Instructions

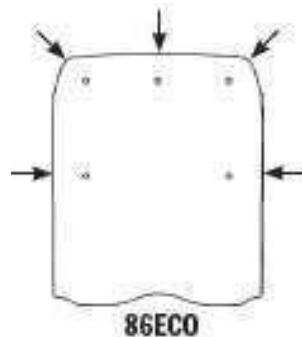
LOCKINSERT	LOCK FINGERS Unmounting the dispenser is required to remove the lock fingers. Locate the tabs that secure the lock fingers on the back of the dispenser. Bend the tabs to a position in which the fingers can be removed.
LEFT HUB ARM RIGHT HUB ARM	Unmounting the dispenser is required to remove the arms. Pinch the plastic tabs on the back of the dispenser together while pulling arm from front. Replacement arms can be snapped into place from the front of the dispenser.
86ECO COVER	86ECO COVER Pull one side away from back until hinge pivot clears back. Then pull other side pivot away from back and remove cover.
#14 KEY	#14 DISP KEY

Dispenser Installation and Mounting

ENGLISH	FRANÇAIS	ESPAÑOL
<p style="text-align: center;">INSTALLATION INSTRUCTIONS</p> <p>The user is responsible for the proper installation and use of this dispenser.</p> <p>Equipment needed: Measuring tape Level Drill 5/16" drill bit Screwdriver Pencil Eye protection Assemble appropriate fasteners (screws, bolts, anchors, washers, etc.) for mounting.</p> <ol style="list-style-type: none"> 1. Determine position on wall/surface with unit open. Through the holes at the back of the unit, use pencil to mark the spots where the drilling will be necessary. Try to mark spots as close as possible to the outer edges. 2. Drill the marked spots on the wall/surface with 5/16" drill bit. 3. Complete the installation. Be sure to use fasteners (and anchors) in all mounting holes that are appropriate for the wall/surface to which the dispenser will be mounted. The installation should be done with a flat washer between the head of the fastener and the inside back of the dispenser. <p><small>102A PRINTED IN U.S.A. REVISED 699</small></p>	<p style="text-align: center;">INSTRUCTIONS D'INSTALLATION</p> <p>L'utilisateur est responsable de la bonne installation et utilisation appropriée de cette boîte distributrice.</p> <p>Équipement requis: Ruban à mesurer Niveau Perceuse Mèche de 5/16 po Tournevis Crayon Protection pour les yeux</p> <ol style="list-style-type: none"> 1. Déterminer l'endroit où l'appareil sera monté sur le mur avec la boîte distributrice ouverte. À travers les trous au dos de l'appareil, marquer sur le mur avec l'aide d'un crayon la position des percements à réaliser (le plus proche possible des extrémités de l'appareil). 2. Percer le mur aux endroits marqués utilisant une mèche de 5/16 po. 3. Installer la boîte distributrice s'assurant d'utiliser des vis et chevilles appropriées dans tous les trous au dos de l'appareil. Il est recommandé de placer une rondelle entre la tête de la vis et la surface en plastique de la boîte distributrice. 	<p style="text-align: center;">INSTRUCCIONES DE INSTALACION</p> <p>El usuario es responsable por la instalación y uso adecuados del dispensador.</p> <p>Se necesita: Cinta para medir Nivel Taladro Broca de 5/16" Destornillador Lapiz Protección ocular Obtenga tornillos, pernos, anclas y arandelas, etc... apropiados para la pared/superficie de fijación.</p> <ol style="list-style-type: none"> 1. Determinar la posición en la pared/superficie con el dispensador abierto. Por los agujeros en el fondo del aparato, marque en la pared los puntos onde deberán ser hechas las perforaciones (lo más cerca posible de las extremidades del dispensador). 2. Hacer los agujeros en la pared/superficie con la broca de 5/16". 3. Al instalar el dispensador asegúrese que los tornillos, pernos, anclas, arandelas, etc... sean los apropiados para la pared/superficie donde será montado el dispensador y métalos en todos los agujeros del fondo del aparato. Siempre hay que poner una arandela plana entre la cabeza del tornillo y la parte interna del dispensador.

Mounting Height

The lower part of the dispenser should be mounted 53" (135 cm) from the floor. Consult all appropriate building codes for mounting requirements that meet ADA or Title 24 guidelines.



Battery Installation

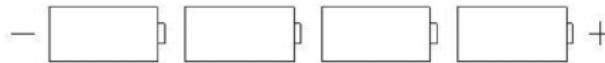
BATTERY LOADING

The 86ECO is powered by 4 D-cell alkaline batteries or by the optional I01320 A/C adapter. Do not use rechargeable or NiCad batteries as these may damage your dispenser. Take care to load batteries in correct orientation as shown on the battery compartment inside door. After inserting batteries wait FIVE seconds before closing cover. If the batteries are loaded incorrectly, the 86ECO will not function. A flashing red indicator light indicates that batteries need to be replaced.

Instalación de Baterías

El 86ECO está diseñado para operar con 4 baterías alcalinas tipo D. No utilice baterías recargables o NiCad ya que pueden dañar el dispensador. Tenga cuidado al instalar las baterías, oriéntelas con el lado positivo hacia su derecha cuando este de frente al dispensador. Después de instalar las baterías espere 5 segundos antes de cerrar la tapa. Si las baterías no son cargadas correctamente el 86ECO no funcionara. Una luz de indicador roja que destalle indica la baterías requieren reemplazo.

Take care to load batteries in correct orientation, with positive end of battery towards the right as you are facing the dispenser.
(Tenga cuidado al instalar las baterías, oriéntelas con el lado positivo hacia su derecha cuando este de frente al dispensador).



Note: If batteries are loaded incorrectly, the 86ECO will not function. (Nota: Si las baterías son instaladas incorrectamente, el 86ECO no funcionará.)

Paper Loading Instructions

1. Open the cover and prepare to load paper on hubs.
2. Free paper from roll, and position roll so paper drapes from underneath the back of the roll.



3. Feed paper over top roller and between top and bottom roller.
4. Manually turn top roller to engage paper between rollers.
5. Close cover. Dispenser will feed first sheet. Dispenser is ready for use.

Preventive Maintenance

The dispenser should be cleaned any time there is heavy paper dust build-up inside the dispenser. If paper dust is not a problem, approximately every year is a good frequency for cleanings. The following is the recommended procedure to cleaning:

- 1) Open the dispenser and remove the roll of paper. Clear all paper from the feed assembly.
- 2) Clean out any paper dust. This can be done in several ways, such as, vacuuming, blowing out with a can of compressed air (wear safety glasses), wiping out with a damp cloth, etc.
- 3) Clean the cover with a general all-purpose cleaner that is safe for plastics.

Troubleshooting

This dispenser operates in towel hang mode only. A towel will be present at all times. The mechanism will be activated and dispense a new towel only after the present towel has been torn off and removed.

If no towel presents itself after loading paper, remove paper roll, remove and reinsert batteries, waiting 5 seconds between removal and re-inserting. Re-install roll and close cover.

If still no dispensing, remove batteries and replace with new batteries.

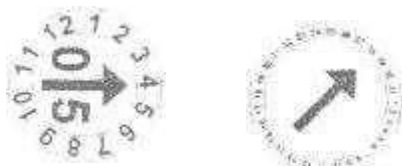
If problems still persist, please contact Essity.

Contacting Essity

Problem: Any other problem not stated above

- Contact the Essity Quality Coordinator.
- Dial 1-866-722-8675, press option 6
- Please have dispenser date code available

Product Code Date Location: Open dispenser, note the date code stamps (2) on the top, right side of the dispenser back wall for circles (like shown below) molded into unit. The circles will show the month and year circle. Please have these available when contacting the Essity Quality Coordinator.



To contact the Essity Quality Coordinator, dial 1-866-722-6659 and press option 6.



**86ECO Tork Electronic HWRT Dispenser
Backplate Template**

