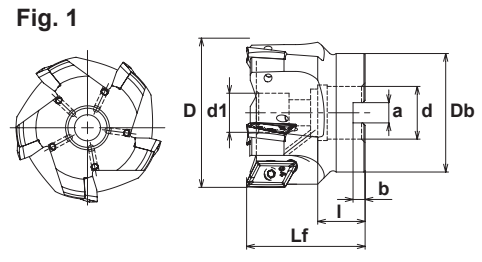




# Aero-Chipper

INCH
METRIC

## FACE MILL ALX type



### G-Body Specifications - Inch G-Body

CATALOG NUMBER	STK	DIMENSIONS									FIG.	INSERT	Q	PARTS	
		D	Lf	Db	d	d1	a	b	l	Screw				Wrench	
ALX-3200-75R-15	•	2.00	2.0	1.85	.750	.63	.319	.197	.75	1	XOGT1605**PD*R	3	DSW-4085	T-15	
ALX-4200-75R-15	•	2.00	2.0	1.85	.750	.63	.319	.197	.75	1		4			
ALX-5300-100R-15	•	3.00	2.0	2.28	1.00	.827	.374	.236	.75	1		5			
ALX-5300-125R-15	•	3.00	2.5	2.85	1.25	1.02	.500	.315	1.25	1		5			

Note: All cutters are supplied without inserts.

### NP Body Specifications - Inch & Metric

CATALOG NUMBER	STK	DIMENSIONS									FIG.	INSERT	Q	PARTS	
		D	Lf	Db	d	d1	a	b	l	Screw				Wrench	
INCH	ALX-3200-75R-16NP	•	2.00	2.0	1.85	.750	.63	.319	.197	.75	1	XOGT1605**PD*R	3	DSW-4085	T-15
	ALX-4200-75R-16NP	•	2.00	2.0	1.85	.750	.63	.319	.197	.75	1		4		
	ALX-3250-100R-16NP	•	2.50	2.0	2.28	1.00	.78	.374	.236	.75	1		3		
	ALX-4300-100R-16NP	•	3.00	2.0	2.28	1.00	.78	.374	.236	.75	1		4		
	ALX-4300-125R-16NP	•	3.00	2.5	2.83	1.25	1.02	.500	.315	1.25	1		4		
	ALX-5400-150R-16NP	•	4.00	2.75	3.78	1.50	1.26	.626	.393	1.41	1		5		
MM	ALX-3052R-22-16NP	•	52	50	47	22	16.5	10.4	6.3	20	1	XOGT1605**PD*R	3	DSW-4085	T-15
	ALX-7160R-200-16NP	•	160	70	100	50.8	72	19	11	43	1		7		

Note: All cutters are supplied without inserts.

### G-Body Specifications - Metric G-Body

CATALOG NUMBER	STK	DIMENSIONS									FIG.	INSERT	Q	PARTS	
		D	Lf	Db	d	d1	a	b	l	Screw				Wrench	
ALX-4050R	•	50	50	45	22.225	16.5	8.4	5	20	1	XOGT1605**PD*R	4	DSW-4085	T15	
ALX-4050R-22	•	50	50	45	22	16.5	10.4	6.3	20	1		4			
ALX-5063R	•	63	50	50	22.225	16.5	8.4	5	20	1		5			
ALX-5063R-22	•	63	50	50	22	16.5	10.4	6.3	20	1		5			

Note: All cutters are supplied without inserts.