

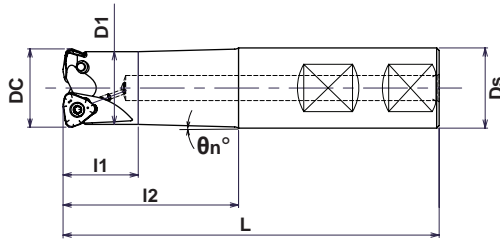
Multi Extreme

INCH

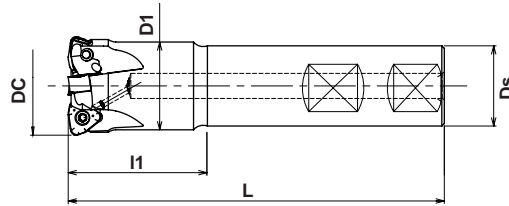
METRIC

End Mill EXM-HF Type

● In case $\phi D_c = \phi 1.25''$



● In case $\phi D_c = \phi 1.50''$



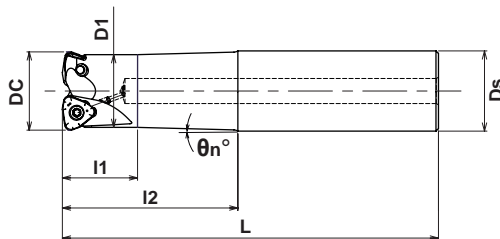
G-Body

Specifications - Inch

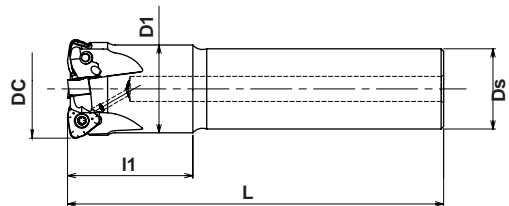
CATALOG NUMBER	STK	DIMENSIONS							INSERT	Q	PARTS	
		Dc	l1	l2	L	D1	Ds	θ_n°			Screw	Wrench
EXM-2125-HF-2.0-S125LG	●	1.25	1.18	2.00	7.00	1.14	1.25	1.5°	WNMU070620ZER-PM	2	TSW-410H	A-15T
EXM-2125-HF-3.0-S125LG	●	1.25	1.18	3.00	8.00	1.14	1.25	1°		2		
EXM-3150-HF-3.0-S125LG	●	1.50	3.00	-	7.00	1.30	1.25	-		3		
EXM-3150-HF-4.75-S125LG	●	1.50	4.75	-	8.00	1.30	1.25	-		3		

Note: All cutters are supplied without inserts or wrenches.

● In case $\phi D_c = \phi 32$



● In case $\phi D_c = \phi 35$ or 40



Specifications - Metric

CATALOG NUMBER	STK	DIMENSIONS							INSERT	Q	PARTS	
		Dc	l1	l2	L	D1	Ds	θ_n°			Screw	Wrench
EXM-2032-HF-70-S32	●	32	30	70	150	29	32	1.5°	WNMU070620ZER-PM	2	TSW-410H	A-15T
EXM-2032-HF-120-S32	●	32	30	120	200	29	32	0.6°		2		
EXM-3035-HF-40-S32	●	35	40	-	150	31	32	-		3		
EXM-3035-HF-40L-S32	●	35	40	-	200	31	32	-		3		
EXM-4040-HF-50-S32	●	40	50	-	150	35	32	-		4		
EXM-4040-HF-50L-S32	●	40	50	-	200	35	32	-		4		

Note: All cutters are supplied without inserts or wrenches.