

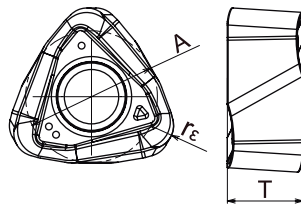
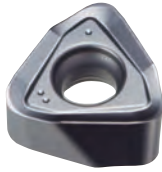


Multi Extreme

INCH

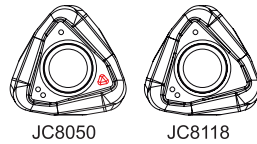
METRIC

Inserts



Catalog Number	Tolerance	PVD Coated		Dimensions (mm)		
		JC8050	JC8118	A	T	r _ε
WNMU070620ZER-PM	M	●	●	11.2	6.4	2

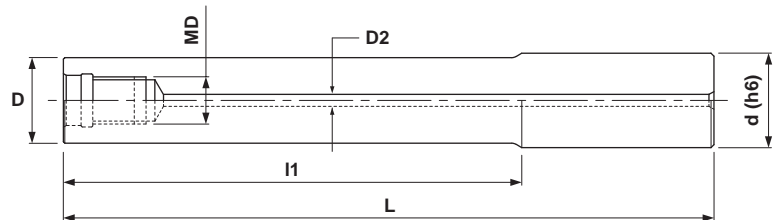
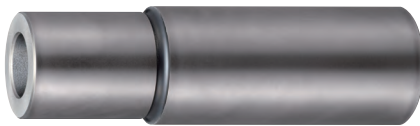
● Each grade shows different mark around the hole for identification.



JC8050

JC8118

Modular Head Holders MGN Type G-Body with coolant thru



Specifications - Inch

CATALOG NUMBER	STK	DIMENSIONS					
		D	l1	L	d	MD	D2
MGN-M16-0.5-S125	●	1.14	.500	3.50	1.25	M16	.315
MGN-M16-1.0-S125	●	1.14	1.00	4.00	1.25	M16	.315
MGN-M16-2.0-S125	●	1.14	2.00	5.00	1.25	M16	.315
MGN-M16-3.0-S125	●	1.14	3.00	6.00	1.25	M16	.315

Specifications - Metric

CATALOG NUMBER	STK	DIMENSIONS					
		D	l1	L	d	MD	D2
MGN-M16-37-S32	●	29	37	107	32	M16	6
MGN-M16-77-S32	●	29	77	157	32	M16	6



INCH

METRIC

Multi Extreme

MODULAR HEAD HOLDERS

MSN Type

Solid Carbide with Coolant Thru



Fig. 1

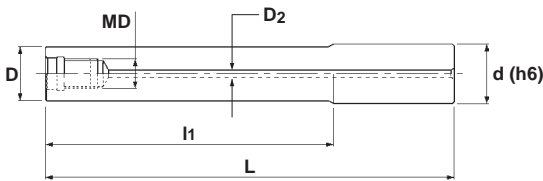
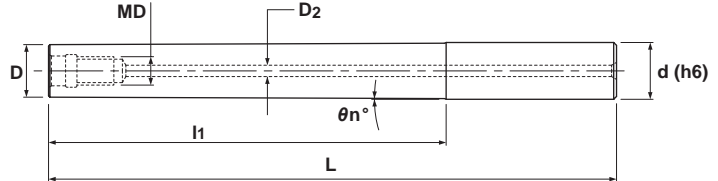


Fig. 2



Specifications

	CATALOG NUMBER	STK	DIMENSIONS						FIG.	
			D	l1	L	d	θn°	MD		D2
INCH	MSN-M16-0.5-S125C	•	1.14	.500	3.50	1.25	-	M16	.315	1
	MSN-M16-1.0-S125C	•	1.14	1.00	4.00	1.25	-	M16	.315	1
	MSN-M16-2.0-S125C	•	1.14	2.00	5.00	1.25	-	M16	.315	1
	MSN-M16-4.0-S125C	•	1.14	4.00	7.00	1.25	-	M16	.315	1
	MSN-M16-6.0-S125C	•	1.14	6.00	9.00	1.25	-	M16	.315	1
	MSN-M16-8.0-S125C	•	1.14	8.00	11.00	1.25	-	M16	.315	1
METRIC	MSN-M16-25-S32C	•	29	25	90	32	-	M16	8	1
	MSN-M16-55-S32C	•	29	55	120	32	-	M16	8	1
	MSN-M16-77-S32C	•	29	77	157	32	-	M16	8	1
	MSN-M16-97-S32C	•	29	97	177	32	-	M16	8	1
	MSN-M16-105-S32C	•	29	105	170	32	-	M16	8	1
	MSN-M16-117T-S32C	•	29	117	197	32	0°38'	M16	8	2
	MSN-M16-127-S32C	•	29	127	207	32	-	M16	8	1
	MSN-M16-127T-S32C	•	29	127	207	32	0°30'	M16	8	2
	MSN-M16-155-S32C	•	29	155	220	32	-	M16	8	1
	MSN-M16-177-S32C	•	29	177	257	32	-	M16	8	1
	MSN-M16-177T-S32C	•	29	177	257	32	0°23'	M16	8	2
	MSN-M16-195-S32C	•	29	195	260	32	-	M16	8	1
	MSN-M16-197T-S32C	•	29	197	277	32	0°23'	M16	8	2
	MSN-M16-225-S32C	•	29	225	290	32	-	M16	8	1
	MSN-M16-245-S32C	•	29	245	310	32	-	M16	8	1
MSN-M16-295-S32C	•	29	295	360	32	-	M16	8	1	



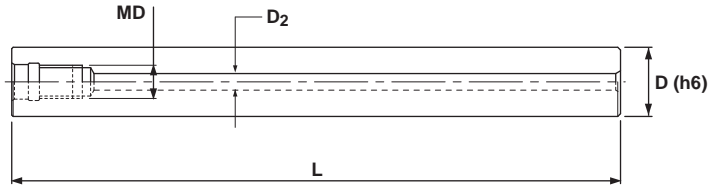
Multi Extreme

METRIC

MODULAR HEAD HOLDERS

MSN Type - Straight

Solid Carbide with Coolant Thru



Specifications

CATALOG NUMBER	STK	DIMENSIONS			
		D	L	MD	D2
MSN-M16-160S-S28C	•	28	160	M16	8
MSN-M16-230S-S28C	•	28	230	M16	8
MSN-M16-310S-S28C	•	28	310	M16	8
MSN-M16-157S-S32C	•	32	157	M16	8
MSN-M16-217S-S32C	•	32	217	M16	8
MSN-M16-287S-S32C	•	32	287	M16	8
MSN-M16-357S-S32C	•	32	357	M16	8