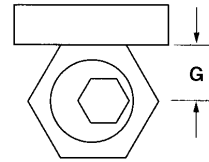
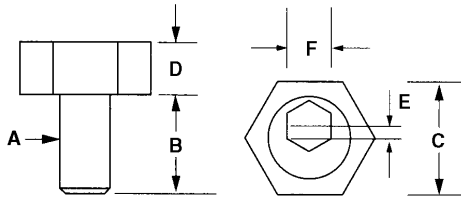


## Micro™ Clamps



Jergens Micro™ Clamps feature both high hold down forces and low profiles, which makes them ideal for building fixtures on Ball Lock® fixturing plates. Two simple components make them work: a hardened steel socket cap screw with an offset head and a hexagonal washer. A half turn tightens or loosens the workpiece.

- Low profile makes computer programming easier
- Cam action provides fast, strong clamping
- Small size allows more parts per load
- Requires only a tapped hole in your fixture
- Available in stainless steel
- Note clockwise rotation recommended workpiece stop should be on the right of the Clamp.

Part Number Steel	Part Number Stainless	A	B	C	D	Total Distance of Measurement E	Key Size F	G*	Maximum Holding Force	Replacement Screw
68501	—	8-32	.350	.312	.110	.030	5/64	.150	205	68521
68502	—	10-32	.340	.500	.160	.040	3/32	.250	350	68533
68503	68153	1/4-20	.470	.625	.190	.040	1/8	.308	800	68523
68505	—	5/16-24	.460	.812	.190	.040	3/16	.400	750	68525
68506	68515	5/16-18	.460	.812	.190	.040	3/16	.400	750	68526
68507	—	3/8-16	.710	.812	.250	.050	3/16	.400	2,000	68527
68509	—	1/2-13	.900	1.000	.375	.100	5/16	.500	4,000	68529
68511	—	5/8-11	1.125	1.187	.500	.100	3/8	.590	6,000	68531

\* This measurement is the correct location to drill and tap the hole from the edge of the work piece.

### Metric

Part Number Steel	Part Number Stainless	A	B	C	D	Total Distance of Measurement E	Key Size F	G*	Maximum Holding Force (N)
68571	—	M4 x 0.7	9.6	7.93	2.8	.76	3	3.8	910
68572	68551	M6 x 1.0	11.2	15.86	4.75	1.01	4	7.8	3,558
68573	68553	M8 x 1.25	15.0	20.61	4.75	1.01	5	10.15	3,355
68574	—	M10 x 1.5	19.0	20.61	6.35	1.52	7	10.15	8,895
68575	—	M12 x 1.75	22.8	25.38	9.52	2.03	8	12.7	17,790
68576	—	M16 x 2.0	28.5	30.13	12.69	2.54	12	15.0	26,680

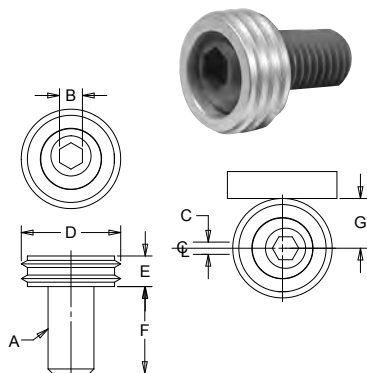
\* This measurement is the correct location to drill and tap the hole from the edge of the work piece.

Replacement Screws available, contact customer service for more information.

## Knife Edge Clamps

Knife edge clamps can be used for clamping rough cut stock, castings, or any material that requires a hardened clamping element. Hardened steel, brass-plated.

Replacement Screws available, contact customer service for more information.



Part Number	A	B	C	D	E	F	G*	Torque (ft. lbs)	Max. Holding Force (lbs)
68547	3/8-16	3/16	0.050	0.812	0.250	0.710	0.400	16.6	2,000
68548	1/2-13	5/16	0.080	1.000	0.375	0.900	0.500	52	4,000
68549	5/8-11	3/8	0.100	1.187	0.500	1.125	0.590	80	6,000
Metric								(Nm)	(N)
68840	M10	7M	1.27	20.60	6.35	19.00	10.15	28	8,900
68841	M12	8M	2.03	25.40	9.52	22.80	12.70	88	17,800
68842	M16	12M	2.54	30.15	12.70	28.50	15.00	135	26,700

\* This measurement is the correct location to drill and tap the hole from the edge of the work piece.