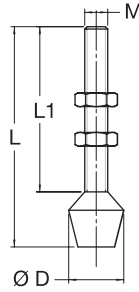


Spindles and Accessories

Rubber Tip Spindles

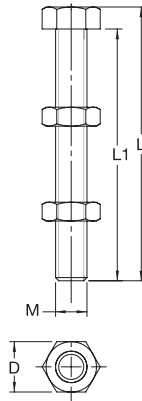
Includes 2 Jam Nuts



Part Number	D (in)	L (in)	L1 (in)	M
70058	0.59	2.16	1.65	1/4-20
70059	0.71	2.16	1.53	5/16-18
70060	0.91	3.50	2.71	3/8-16
70061	0.35	0.78	0.63	M4 X 0.7
70062	0.47	1.14	0.94	M5 X 0.8
70180	0.47	1.30	0.94	M5 X 0.8
70064	0.59	1.77	1.30	M6 X 1.0
70063	0.71	1.77	1.14	M8 X 1.25
70065	0.71	2.16	1.53	M8 X 1.25
70181	0.71	2.55	1.92	M8 X 1.25
70182	0.91	3.33	2.55	M10 X 1.5
70183	1.26	6.70	5.78	M16 X 2.0

Standard Hex Spindles

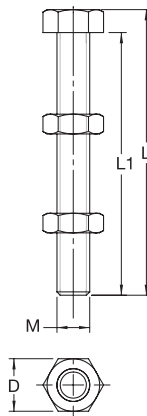
Includes 2 Jam Nuts



Part Number	D (in)	L (in)	L1 (in)	M
70068	0.44	0.80	0.62	1/4-20
70069	0.50	1.22	1.00	5/16-18
70070	0.56	1.50	1.25	3/8-16
70071	0.75	3.31	3.00	1/2-13
70072	0.75	4.81	4.50	1/2-13

Standard Hex Spindles - Stainless Steel

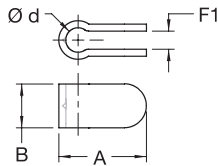
Includes 2 Jam Nuts



Part Number	D (in)	L (in)	L1 (in)	M
70093	0.31	1.30	1.18	M5 X 0.8
70094	0.39	1.73	1.57	M6 X 1.0
70095	0.51	2.77	2.56	M8 X 1.25
70097	0.44	1.67	1.50	1/4-20
70098	0.50	2.72	2.50	5/16-18
70099	0.94	6.70	6.30	M16 X 2.0

Spindles and Accessories

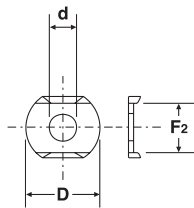
Bolt Retainer



Part Number	A (in)	B (in)	F1 (in)	d
70086	1.20	0.47	0.25	5/16 (M8)
70087	1.46	0.78	0.32	3/8 (M10)
70088	1.53	0.78	0.40	1/2 (M12)
70089	1.70	0.98	0.40	5/8 (M16)

Flanged Washers

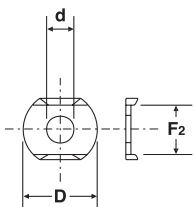
2 Washer Set



Part Number	D (in)	d (in)	F2 (in)
70110	0.35	0.17	—
70111	0.59	0.20	0.37
70112	0.77	0.24	0.53
70113	0.89	0.32	0.65
70114	0.98	0.40	0.77
70115	1.08	0.50	0.85
70116	1.22	0.64	1.16

Flanged Washers - Stainless Steel

2 Washer Set



Part Number	D (in)	d (in)	F2 (in)
70100	0.35	0.17	—
70101	0.59	0.20	0.37
70102	0.77	0.24	0.53
70103	0.89	0.32	0.65