



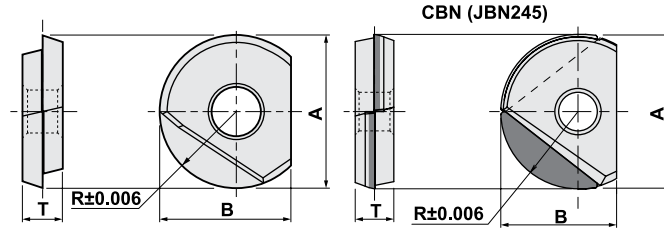
Mirror Ball

INCH

METRIC

MIRROR BALL INSERTS

Mirror "A" & "AAA" type



Specifications - (radius tolerance +/- .006mm)

CATALOG NUMBER	DIMENSIONS						RECOMMENDED TORQUE (lbs x ft)		STOCK				
									COATED		DIAMOND COATING	UNCOATED	CBN
	A	R	B	C	T	lbs/ft	Nm	DH103	JC5015	JC10000	KT9	JBN245	
INCH SIZES	BME-0250A	.250	.125	.196	-	.078	.37	.5	•				
	BME-0312A	.312	.156	.275	-	.094	.66	.9	•				
	BME-0375A	.375	.187	.326	-	.102	.89	1.2	•				
	BME-0500A	.500	.250	.409	-	.118	1.48	2.0	•				
	BME-0625A	.625	.312	.472	-	.157	2.21	3.0	•				
	BME-0750A	.750	.375	.570	-	.196	2.95	4.0	•				
	BME-1000A	1.00	.500	.736	-	.236	3.69	5.0	•				
	BME-1250A	1.25	.625	.925	-	.275	4.43	6.0	•				
METRIC SIZES	BNM-060	6	3	5	-	2	.37	.5	•	•	•	•	
	BNM-070	7	3.5	5.5	-	2	.37	.5		•	•		
	BNM-080	8	4	7	-	2.4	.66	.9	•	•	•	•	
	BNM-100	10	5	8.5	-	2.6	.89	1.2	•	•	•	•	
	BNM-110	11	5.5	9	-	2.6	.89	1.2			•		
	BNM-120	12	6	10	-	3	1.48	2.0	•	•	•	•	
	BNM-160	16	8	12	-	4	2.21	3.0	•	•	•	•	•
	BNM-200	20	10	15	1	5	2.95	4.0	•	•	•	•	•
	BNM-250	25	12.5	18.5	1	6	3.69	5.0	•	•		•	•
	BNM-300	30	15	22.5	1	7	4.43	6.0	•	•		•	•
BNM-320	32	16	23.5	-	7	4.43	6.0	•	•		•		

Specifications - (radius tolerance +/- .002mm)

CATALOG NUMBER	DIMENSIONS						RECOMMENDED TORQUE (lbs x ft)		STOCK				
									COATED				
	A	R	B	C	T	lbs/ft	Nm	JC5015					
METRIC SIZES	BNM-060-AAA	6	3	5	-	2	.37	.5	•				
	BNM-080-AAA	8	4	7	-	2.4	.66	.9	•				
	BNM-100-AAA	10	5	8.5	-	2.6	.89	1.2	•				
	BNM-120-AAA	12	6	10	-	3	1.48	2.0	•				
	BNM-160-AAA	16	8	12	-	4	2.21	3.0	•				
	BNM-200-AAA	20	10	15	-	5	2.95	4.0	•				
	BNM-250-AAA	25	12.5	18.5	-	6	3.69	5.0	•				
	BNM-300-AAA	30	15	22.5	-	7	4.43	6.0	•				
	BNM-320-AAA	32	16	23.5	-	7	4.43	6.0	•				



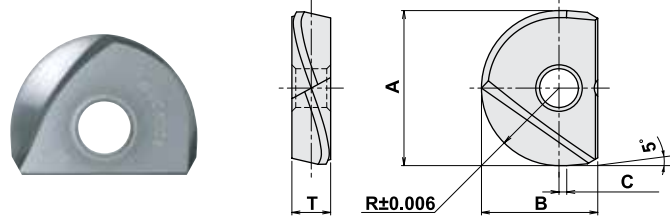
INCH

METRIC

Mirror Ball

MIRROR BALL INSERTS

Mirror "S" & "SS" type



Specifications - (radius tolerance +/- .006mm)

CATALOG NUMBER	DIMENSIONS					RECOMMENDED TORQUE (lbs x ft)		STOCK			
	A	R	B	C	T	lbs/ft	Nm	COATED	DLC	UNCOATED	
								JC8008	JC20003	FZ05/FZ08	
INCH SIZES	BME-0250-S	.250	.125	.196	-	.078	.37	.5	•		•
	BME-0312-S	.312	.156	.275	.020	.094	.66	.9	•		
	BME-0375-S	.375	.187	.326	.039	.102	.89	1.2	•		•
	BME-0500-S	.500	.250	.409	.039	.118	1.48	2.0	•		•
	BME-0625-S	.625	.312	.472	.039	.157	2.21	3.0	•		•
	BME-0750-S	.750	.375	.570	.039	.196	2.95	4.0	•		•
	BME-1000-S	1.00	.500	.736	.039	.236	3.69	5.0	•		•
	BME-1250-S	1.25	.625	.925	.039	.275	4.43	6.0	•		
METRIC SIZES	BNM-060-S	6	3	5	-	2	.37	.5	•	•	•
	BNM-080-S	8	4	7	0.5	2.4	.66	.9	•	•	•
	BNM-100-S	10	5	8.5	1	2.6	.89	1.2	•	•	•
	BNM-120-S	12	6	10	1	3	1.48	2.0	•	•	•
	BNM-160-S	16	8	12	1	4	2.21	3.0		•	•
	BNM-200-S	20	10	15	1	5	2.95	4.0		•	•
	BNM-250-S	25	12.5	18.5	1	6	3.69	5.0		•	•
	BNM-300-S	30	15	22.5	1	7	4.43	6.0		•	•
	BNM-320-S	32	16	23.5	1	7	4.43	6.0	•		

Fig. 1

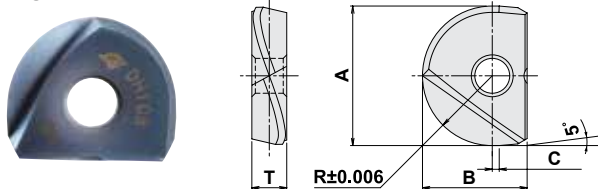
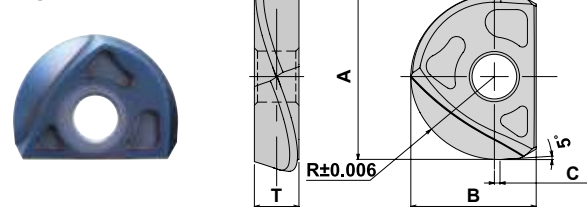


Fig. 2



Specifications - (radius tolerance +/- .006mm)

CATALOG NUMBER	DIMENSIONS					RECOMMENDED TORQUE (lbs x ft)		FIG.	STOCK		
	A	R	B	C	T	lbs/ft	Nm		COATED		
									DH108		
METRIC SIZES	BNM-060-SS	6	3	5	-	2	.37	.5	1	•	
	BNM-080-SS	8	4	7	0.5	2.4	.66	.9	1	•	
	BNM-100-SS	10	5	8.5	1	2.6	.89	1.2	1	•	
	BNM-120-SS	12	6	10	1	3	1.48	2.0	1	•	
	BNM-160-SS	16	8	12	1	4	2.21	3.0	1	•	
	BNM-200-SS	20	10	15	1	5	2.95	4.0	2	•	
	BNM-250-SS	25	12.5	18.5	1	6	3.69	5.0	2	•	
	BNM-300-SS	30	15	22.5	1	7	4.43	6.0	2	•	



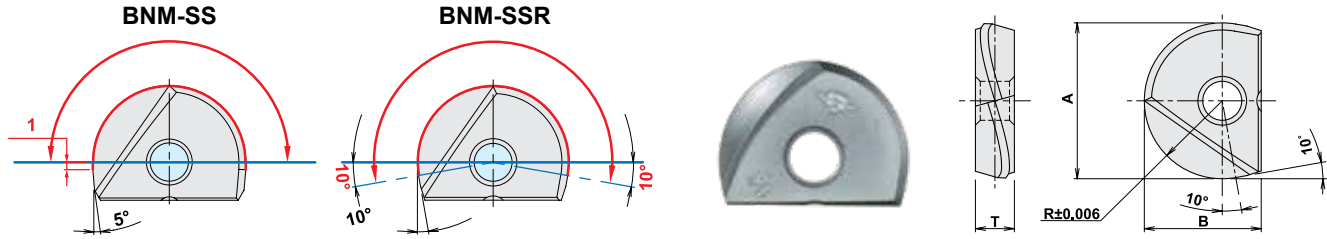
Mirror Ball

INCH

METRIC

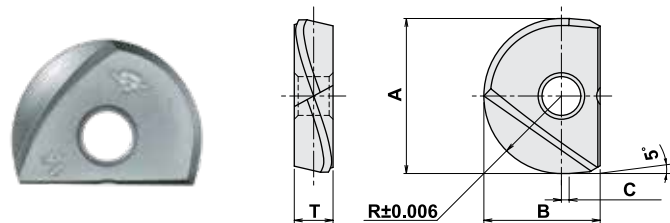
MIRROR BALL INSERTS

Mirror "SSR" & "TG" type



Specifications - (radius tolerance +/- .006mm)

CATALOG NUMBER	DIMENSIONS					RECOMMENDED TORQUE (lbs x ft)		STOCK		
	A	R	B	C	T	lbs/ft	Nm	DH108	COATED	
METRIC SIZES	BNM-080-SSR	8	4	7	-	2.4	.66	.9	•	
	BNM-100-SSR	10	5	8.5	-	2.6	.89	1.2	•	
	BNM-120-SSR	12	6	10	-	3	1.48	2.0	•	
	BNM-160-SSR	16	8	12	-	4	2.21	3.0	•	
	BNM-200-SSR	20	10	15	-	5	2.95	4.0	•	
	BNM-250-SSR	25	12.5	18.5	-	6	3.69	5.0	•	
BNM-300-SSR	30	15	22.5	-	7	4.43	6.0	•		



Specifications - (radius tolerance +/- .006mm)

CATALOG NUMBER	DIMENSIONS					RECOMMENDED TORQUE (lbs x ft)		STOCK		
	A	R	B	C	T	lbs/ft	Nm	COATED	DH102	
INCH SIZES	BME-0375-TG	.375	.187	.326	.039	.102	.89	1.2	•	
	BME-0500-TG	.500	.250	.409	.039	.118	1.48	2.0	•	
	BME-0750-TG	.750	.375	.570	.039	.196	2.95	4.0	•	
	BME-1000-TG	1.00	.500	.736	.039	.236	3.69	5.0	•	
METRIC SIZES	BNM-060-TG	6	3	5	-	2	.37	.5	•	
	BNM-080-TG	8	4	7	0.5	2.4	.66	.9	•	
	BNM-100-TG	10	5	8.5	1	2.6	.89	1.2	•	
	BNM-120-TG	12	6	10	1.5	3	1.48	2.0	•	
	BNM-160-TG	16	8	12	1.5	4	2.21	3.0	•	
	BNM-200-TG	20	10	15	2	5	2.95	4.0	•	
	BNM-250-TG	25	12.5	18.5	2	6	3.69	5.0	•	
	BNM-300-TG	30	15	22.5	2	7	4.43	6.0	•	
BNM-320-TG	32	16	23.5	2	7	4.43	6.0	•		

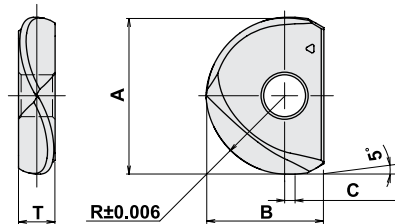
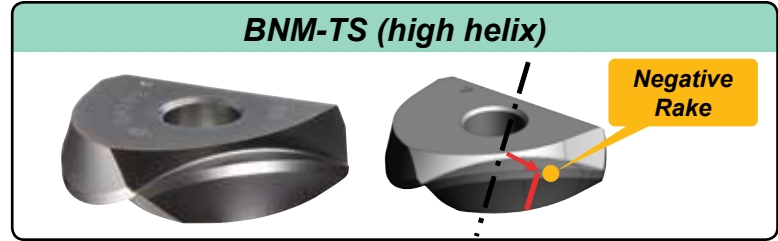
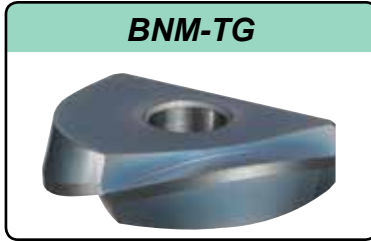


METRIC

Mirror Ball

MIRROR BALL INSERTS

Mirror "TS" & "GRM" type

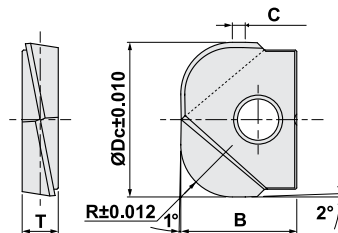
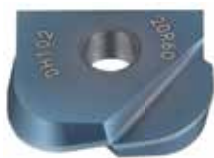


Specifications - (radius tolerance +/- .006mm)

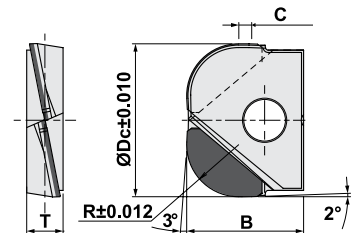
CATALOG NUMBER	DIMENSIONS					RECOMMENDED TORQUE (lbs x ft)		COATED
	A	R	B	C	T	lbs/ft	Nm	PVD DH202
BNM-160-TS	16	8	12	1.5	4	2.21	3.0	•
BNM-200-TS	20	10	15	2	5	2.95	4.0	•
BNM-250-TS	25	12.5	18.5	2	6	3.69	5.0	•
BNM-300-TS	30	15	22.5	2	7	4.43	6.0	•

Mirror "GRM" type

PVD (JC8015 / DH102)



CBN (JBN245)



Specifications - (radius tolerance +/- .006mm)

CATALOG NUMBER	DIMENSIONS					RECOMMENDED TORQUE (lbs x ft)		STOCK		
	A	R	B	C	T	lbs/ft	Nm	COATED		CBN
								PVD		
								DH102	JC8015	JBN245
GRM-160-R50	16	5	12	1.1	4	2.21	3.0	•	•	•
GRM-200-R60	20	6	15	1.7	5	2.95	4.0	•	•	•
GRM-250-R80	25	8	18.5	2.0	6	3.69	5.0	•	•	•
GRM-300-R10	30	10	22.5	2.5	7	4.43	6.0	•	•	•