

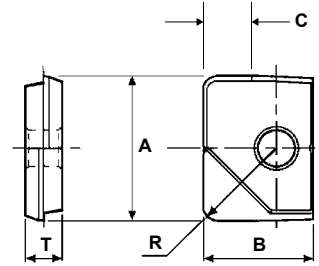


INCH

Mirror Radius

INSERTS

Mirror Radius



Specifications

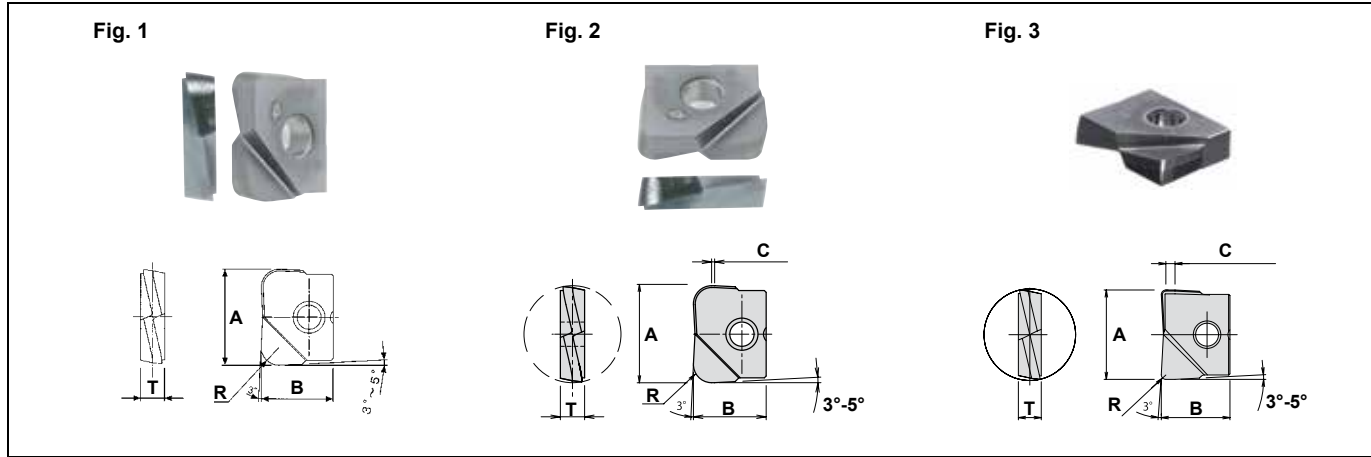
CATALOG NUMBER	DIMENSIONS					RECOMMENDED TORQUE		STOCK COATED				
	A	R	B	C	T	lbs./ft	Nm	DH103	JC5003	JC8003	JC5015	JC8015
RME-0312-015	.312	.015	.275	.102	.094	.66	.9				•	
RME-0312-031	.312	.031	.275	.102	.094	.66	.9	•			•	
RME-0312-062	.312	.062	.275	.102	.094	.66	.9		•		•	
RME-0375-015	.375	.015	.326	.126	.102	.89	1.2			•		•
RME-0375-031	.375	.031	.326	.126	.102	.89	1.2	•				
RME-0375-062	.375	.062	.326	.126	.102	.89	1.2	•			•	
RME-0500-015	.500	.015	.409	.165	.118	1.48	2.0			•		•
RME-0500-031	.500	.031	.409	.165	.118	1.48	2.0	•				•
RME-0500-062	.500	.062	.409	.165	.118	1.48	2.0	•				•
RME-0625-031	.625	.031	.472	.209	.157	2.21	3.0	•				•
RME-0625-062	.625	.062	.472	.209	.157	2.21	3.0	•				•
RME-0625-125	.625	.125	.472	.209	.157	2.21	3.0					•
RME-0750-031	.750	.031	.570	.252	.196	2.95	4.0	•				•
RME-0750-062	.750	.062	.570	.252	.196	2.95	4.0	•				•
RME-0750-125	.750	.125	.570	.252	.196	2.95	4.0	•			•	
RME-1000-031	1.00	.031	.736	.335	.236	3.69	5.0					•
RME-1000-062	1.00	.062	.736	.335	.236	3.69	5.0	•				•
RME-1000-125	1.00	.125	.736	.335	.236	3.69	5.0	•				•
RME-1000-250	1.00	.250	.736	.335	.236	3.69	5.0					•
RME-1250-062	1.25	.062	.925	.417	.275	4.43	6.0	•				•
RME-1250-125	1.25	.125	.925	.417	.275	4.43	6.0			•		•
RME-1250-250	1.25	.250	.925	.417	.275	4.43	6.0		•			



Mirror Radius

INCH

High Feed Mirror Radius Inserts FRE/HRE - Styles



Specifications

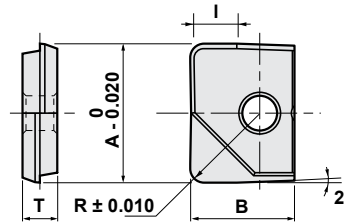
CATALOG NUMBER	DIMENSIONS					FIG.	COATED GRADE		
	A	R	B	C	T		JC6102	DH102	JC8015
FRE-0250-031	.250	.031	.203	.031	.078	3		•	
FRE-0250-062	.250	.062	.203	.031	.078	3		•	
HRE-0312-062	.312	.062	.275	-	.094	1			•
HRE-0312-078	.312	.078	.275	-	.094	1			•
HRE-0375-031-F	.375	.031	.325	.059	.102	3	•		
FRE-0375-031	.375	.031	.325	.059	.102	3			•
HRE-0375-062	.375	.062	.325	-	.102	1			•
HRE-0375-078	.375	.078	.325	-	.102	1			•
FRE-0500-031	.500	.031	.407	.059	.118	3		•	•
FRE-0500-062	.500	.062	.407	.059	.118	3		•	•
HRE-0500-078	.500	.078	.407	-	.118	1			•
HRE-0500-125	.500	.125	.407	-	.118	1			•
FRE-0625-062	.625	.062	.470	.078	.157	3			•
HRE-0625-125	.625	.125	.470	-	.157	1			•
FRE-0750-031	.750	.031	.572	.078	.197	3		•	•
FRE-0750-062	.750	.062	.572	.078	.197	3		•	•
HRE-0750-125	.750	.125	.572	-	.197	1			•
FRE-1000-031	1.00	.031	.735	.078	.238	3		•	•
FRE-1000-062	1.00	.062	.735	.078	.236	3		•	•
HRE-1000-125	1.00	.125	.735	-	.236	1			•

**METRIC**

Mirror Radius

INSERTS

Mirror Radius



Specifications

CATALOG NUMBER	DIMENSIONS					RECOMMENDED TORQUE		STOCK			
	A	R	B	I	T	lbs./ft	Nm	COATED		UNCOATED	DIAMOND
								DH103	JC8015	KT9	JC10000
RNM-060-R03	6	0.3	5	2	2	.37	.5	•	•		
RNM-060-R05	6	0.5	5	2	2	.37	.5	•	•		
RNM-060-R10	6	1.0	5	2	2	.37	.5	•	•		
RNM-080-R03	8	0.3	7	2.7	2.4	.66	.9	•	•	•	
RNM-080-R05	8	0.5	7	2.7	2.4	.66	.9	•	•	•	•
RNM-080-R10	8	1.0	7	2.7	2.4	.66	.9	•	•	•	•
RNM-100-R0	10	0.1	8.5	3.3	2.6	1.22	1.2		•		
RNM-100-R03	10	0.3	8.5	3.3	2.6	.89	1.2	•	•	•	
RNM-100-R05	10	0.5	8.5	3.3	2.6	.89	1.2	•	•	•	•
RNM-100-R10	10	1.0	8.5	3.3	2.6	.89	1.2	•	•	•	•
RNM-100-R15	10	1.5	8.5	3.3	2.6	.89	1.2		•	•	
RNM-100-R20	10	2.0	8.5	3.3	2.6	.89	1.2	•	•	•	
RNM-120-R0	12	0.1	10	4	3	1.48	2.0		•		
RNM-120-R03	12	0.3	10	4	3	1.48	2.0	•	•	•	
RNM-120-R05	12	0.5	10	4	3	1.48	2.0	•	•	•	•
RNM-120-R10	12	1.0	10	4	3	1.48	2.0	•	•	•	•
RNM-120-R15	12	1.5	10	4	3	1.48	2.0	•	•	•	
RNM-120-R20	12	2.0	10	4	3	1.48	2.0	•	•	•	
RNM-130-R03	13	0.3	10	4	3	1.48	2.0		•		
RNM-130-R05	13	0.5	10	4	3	1.48	2.0		•		
RNM-130-R10	13	1.0	10	4	3	1.48	2.0		•		
RNM-130-R20	13	2.0	10	4	3	1.48	2.0		•		
RNM-160-R0	16	0.1	12	5.3	4	2.21	3.0		•		
RNM-160-R03	16	0.3	12	5.3	4	2.21	3.0	•	•	•	
RNM-160-R05	16	0.5	12	5.3	4	2.21	3.0	•	•	•	
RNM-160-R10	16	1.0	12	5.3	4	2.21	3.0	•	•	•	
RNM-160-R15	16	1.5	12	5.3	4	2.21	3.0	•	•	•	
RNM-160-R20	16	2.0	12	5.3	4	2.21	3.0	•	•	•	
RNM-170-R03	17	0.3	12	5.3	4	2.21	3.0		•		
RNM-170-R05	17	0.5	12	5.3	4	2.21	3.0		•		
RNM-170-R10	17	1.0	12	5.3	4	2.21	3.0		•		
RNM-170-R20	17	2.0	12	5.3	4	2.21	3.0		•		
RNM-200-R0	20	0.1	15	6.7	5	2.95	4.0		•		
RNM-200-R03	20	0.3	15	6.7	5	2.95	4.0	•	•	•	
RNM-200-R05	20	0.5	15	6.7	5	2.95	4.0	•	•	•	
RNM-200-R10	20	1.0	15	6.7	5	2.95	4.0	•	•	•	
RNM-200-R15	20	1.5	15	6.7	5	2.95	4.0	•	•	•	
RNM-200-R20	20	2.0	15	6.7	5	2.95	4.0	•	•	•	
RNM-200-R30	20	3.0	15	6.7	5	2.95	4.0		•		
RNM-210-R03	21	0.3	15	6.7	5	2.95	4.0		•		
RNM-210-R05	21	0.5	15	6.7	5	2.95	4.0		•		
RNM-210-R10	21	1.0	15	6.7	5	2.95	4.0		•		
RNM-210-R20	21	2.0	15	6.7	5	2.95	4.0		•		

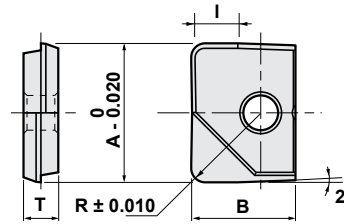
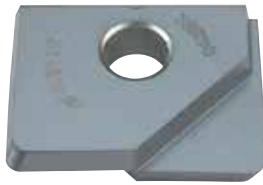


Mirror Radius

METRIC

INSERTS

Mirror Radius



Specifications

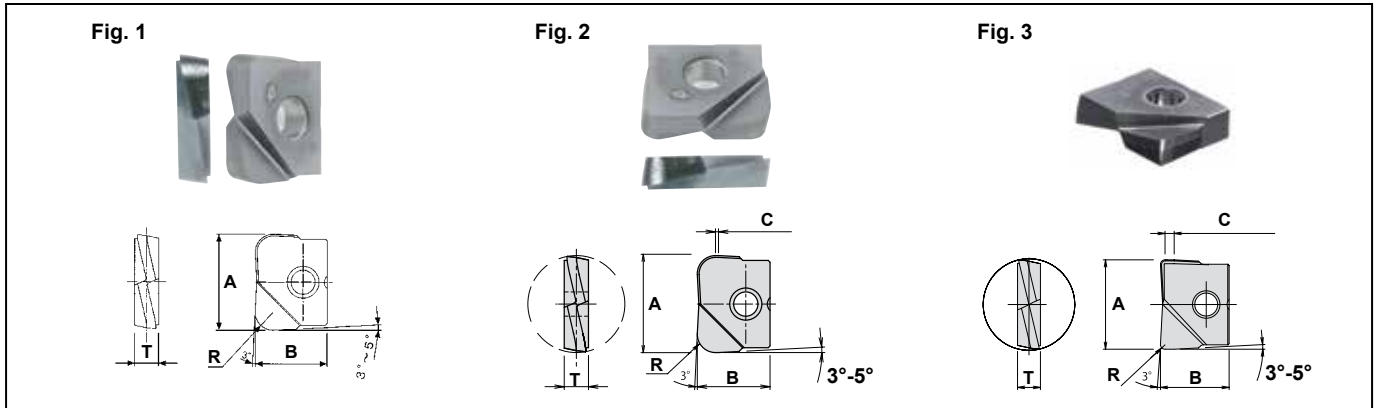
CATALOG NUMBER	DIMENSIONS					RECOMMENDED TORQUE		STOCK		
	A	R	B	I	T	lbs./ft	Nm	COATED		
								DH103	JC8015	
RNM-250-R0	25	0.1	18.5	8.3	6	3.69	5.0		•	
RNM-250-R03	25	0.3	18.5	8.3	6	3.69	5.0	•	•	
RNM-250-R05	25	0.5	18.5	8.3	6	3.69	5.0	•	•	
RNM-250-R10	25	1.0	18.5	8.3	6	3.69	5.0	•	•	
RNM-250-R15	25	1.5	18.5	8.3	6	3.69	5.0	•	•	
RNM-250-R20	25	2.0	18.5	8.3	6	3.69	5.0	•	•	
RNM-250-R30	25	3.0	18.5	8.3	6	3.69	5.0		•	
RNM-260-R03	26	0.3	18.5	8.3	6	3.69	5.0		•	
RNM-260-R05	26	0.5	18.5	8.3	6	3.69	5.0		•	
RNM-260-R10	26	1.0	18.5	8.3	6	3.69	5.0		•	
RNM-260-R20	26	2.0	18.5	8.3	6	3.69	5.0		•	
RNM-300-R03	30	0.3	22.5	10	7	4.43	6.0	•	•	
RNM-300-R05	30	0.5	22.5	10	7	4.43	6.0	•	•	
RNM-300-R10	30	1.0	22.5	10	7	4.43	6.0	•	•	
RNM-300-R15	30	1.5	22.5	10	7	4.43	6.0		•	
RNM-300-R20	30	2.0	22.5	10	7	4.43	6.0	•	•	
RNM-300-R30	30	3.0	22.5	10	7	4.43	6.0		•	
RNM-320-R03	32	0.3	23.5	10.7	7	4.43	6.0	•	•	
RNM-320-R05	32	0.5	23.5	10.7	7	4.43	6.0	•	•	
RNM-320-R10	32	1.0	23.5	10.7	7	4.43	6.0	•	•	
RNM-320-R15	32	1.5	23.5	10.7	7	4.43	6.0		•	
RNM-320-R20	32	2.0	23.5	10.7	7	4.43	6.0	•	•	
RNM-320-R30	32	3.0	23.5	10.7	7	4.43	6.0		•	



METRIC

Mirror Radius

High Feed Mirror Radius Inserts FRM/HRM - Styles



Specifications

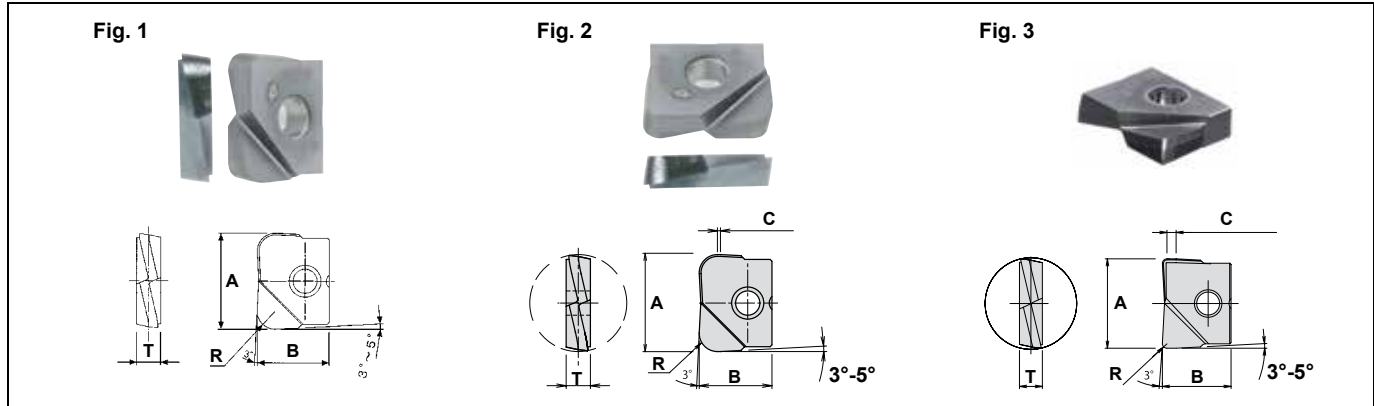
CATALOG NUMBER	DIMENSIONS					FIG.	COATED GRADE	
	A	R	B	C	T		DH102	JC8015
FRM-060-R03	6	0.3	5	0.8	2	3	•	
FRM-060-R05	6	0.5	5	0.8	2	3	•	•
FRM-060-R10	6	1.0	5	0.8	2	3	•	•
HRM-060-R05	6	0.5	5	-	2	1		•
HRM-060-R10	6	1.0	5	-	2	1		•
HRM-060-R15	6	1.5	5	-	2	1		•
FRM-080-R03	8	0.3	7	1.2	2.4	3	•	
FRM-080-R05	8	0.5	7	1.2	2.4	3	•	•
FRM-080-R10	8	1.0	7	1.2	2.4	3	•	•
HRM-080-R20	8	2.0	7	0.3	2.4	2		•
HRM-090-R20	9	2.0	7	0.3	2.4	2		•
FRM-100-R03	10	0.3	8.5	1.5	2.6	3	•	
FRM-100-R05	10	0.5	8.5	1.5	2.6	3	•	•
FRM-100-R10	10	1.0	8.5	1.5	2.6	3	•	•
FRM-100-R20	10	2.0	8.5	1.5	2.6	3	•	
HRM-100-R20	10	2.0	8.5	0.3	2.6	2		•
HRM-110-R20	11	2.0	8.5	0.3	2.6	2		•
FRM-120-R03	12	0.3	10	1.5	3	3	•	
FRM-120-R05	12	0.5	10	1.5	3	3	•	•
FRM-120-R10	12	1.0	10	1.5	3	3	•	•
FRM-120-R20	12	2.0	10	1.5	3	3	•	•
HRM-120-R20	12	2.0	10	0.5	3	2		•
FRM-120-R30	12	3.0	10	1.5	3	3	•	
HRM-130-R20	13	2.0	10	0.5	3	2		•
FRM-160-R03	16	0.3	12	2	4	3	•	
FRM-160-R05	16	0.5	12	2	4	3	•	•
FRM-160-R10	16	1.0	12	2	4	3	•	•
FRM-160-R15	16	1.5	12	2	4	3	•	
FRM-160-R20	16	2.0	12	2	4	3	•	•
HRM-160-R20	16	2.0	12	0.5	4	2		•
FRM-160-R30	16	3.0	12	2	4	3	•	
HRM-160-R30	16	3.0	12	0.5	4	2		•



Mirror Radius

METRIC

High Feed Mirror Radius Inserts FRM/HRM - Styles



Specifications

CATALOG NUMBER	DIMENSIONS					FIG.	COATED GRADE	
	A	R	B	C	T		DH102	JC8015
FRM-170-R10	17	1.0	12	2	4	3	•	•
HRM-170-R30	17	3.0	12	0.5	4	2		•
FRM-200-R03	20	0.3	15	2	5	3	•	
FRM-200-R05	20	0.5	15	2	5	3	•	•
FRM-200-R10	20	1.0	15	2	5	3	•	•
FRM-200-R15	20	1.5	15	2	5	3	•	
FRM-200-R20	20	2.0	15	2	5	3	•	•
HRM-200-R20	20	2.0	26	0.5	5	2		•
FRM-200-R30	20	3.0	15	2	5	3	•	
HRM-200-R30	20	3.0	15	0.5	5	2		•
FRM-210-R10	21	1.0	15	2	5	3	•	•
HRM-220-R30	22	3.0	15	0.5	5	2		•
FRM-250-R03	25	0.3	18.5	2.5	6	3	•	
FRM-250-R05	25	0.5	18.5	2.5	6	3	•	
FRM-250-R10	25	1.0	18.5	2.5	6	3	•	•
FRM-250-R20	25	2.0	18.5	2.5	6	3	•	•
FRM-250-R30	25	3.0	18.5	2.5	6	3	•	
FRM-300-R03	30	0.3	22.5	3	7	3	•	
FRM-300-R05	30	0.5	22.5	3	7	3	•	
FRM-300-R10	30	1.0	22.5	3	7	3	•	•
FRM-300-R20	30	2.0	22.5	3	7	3	•	•
FRM-300-R30	30	3.0	22.5	3	7	3	•	
FRM-320-R03	32	0.3	23.5	3	7	3	•	
FRM-320-R05	32	0.5	23.5	3	7	3	•	
FRM-320-R10	32	1.0	23.5	3	7	3	•	•
FRM-320-R20	32	2.0	23.5	3	7	3	•	•
FRM-320-R30	32	3.0	23.5	3	7	3	•	