



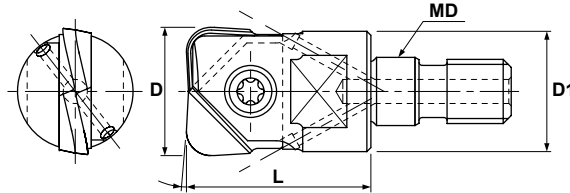
Mirror Radius

INCH

METRIC

MODULAR HEAD

MRX Type - Coolant Thru



Specifications

CATALOG NUMBER	STK	DIMENSIONS				HEAD TORQUE		INSERT		PARTS	
		D	L	D1	MD	lbs/ft	Nm	Inch	Metric	Screw	Wrench
MRX-100-M6	•	10mm	18mm	9.7mm	M6	5.90	8	-	RNM-100, HRM-100, HRM-110, FRM-100	FSW-3007H	T-08
MRX-120-M6	•	.500"/12mm	.787"	.452"	M6	5.90	8	RME-500, HRE-0500, FRE-0500	RNM-120, RNM-130, HRM-120, HRM-130, FRM-120	FSW-3509H	T-10
MRX-160-M8	•	.625"/16mm	.903"	.591"	M8	11.8	16	RME-0625, HRE-0625, FRE-0625	RNM-160, RNM-170, HRM-160, HRM-170, FRM-160, FRM-170	FSW-4013H	T-15
MRX-2075-M10	•	.750"	1.16"	.728"	M10	11.8	16	RME-0750, HRE-0750, FRE-0750	RNM-200, RNM-210, HRM-200, HRM-220, FRM-200, FRM-210	FSW-5016H	A-20W
MRX-200-M10	•	20mm	1.16"	.748"	M10	11.8	16	-	RNM-200, RNM-210, HRM-200, HRM-220, FRM-200, FRM-210	FSW-5016H	A-20W
MRX-250-M12	•	1.0"/25mm	1.38"	.945"	M12	14.7	20	RME-1000, HRE-1000, FRE-1000	RNM-250, RNM-260, FRM-250	FSW-6020	T-30
MRX-300-M16	•	1.25"/30mm or 32mm	1.69"	1.14"	M16	18.4	25	RME-1250	RNM-300, RNM-320, FRM-300, FRM-320	FSW-8025	A-40
MRX-320-M16	•	1.25"/32MM	1.69"	1.14"	M16	18.4	25	RME-1250	RNM-320, FRM-320	FSW-8025	A-40

See page A-77 for Modular Head Shanks

Note: All cutters are supplied without inserts or wrenches.