



QM Max GII

Max Master



- Double sided high feed insert with 4 cutting edges.
- Low cutting force with optimum cutting edge.
- New strong PH chipbreaker insert is excellent in fracture resistant and applicable to heavy applications.
- Excellent in ramping, helical interpolation and high efficient pocket milling.
- G-body is a GN surface-hardening treatment on thermal resistant high strength steel giving a hardness over 65 HRC and secures insert pocket and holder against thermal deformation improving body durability.

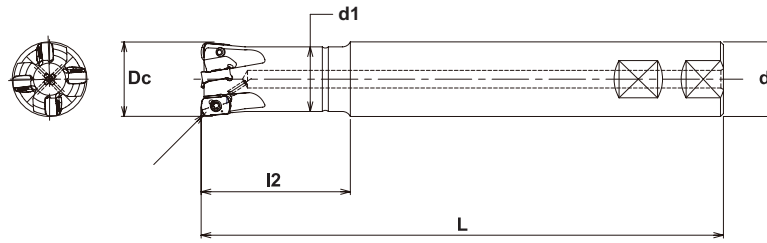


QM Max GII

INCH

METRIC

End Mill GMXS Style

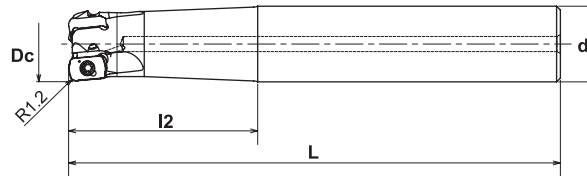


Specifications - Inch

CATALOG NUMBER	STK	DIMENSIONS					INSERT	Q	PARTS	
		Dc	d1	l2	L	d			Screw	Wrench
GMXS-2062-2.0-S062NP	•	.625	.551	2.00	5.00	.625	ENMU100412ZER-**	2	TSW-2567H	T-08
GMXS-2062-3.0-S062NP	•	.625	.551	3.00	6.25	.625		2		
GMXS-3075-2.0-S075NP	•	.750	.677	2.00	5.00	.750		3		
GMXS-3075-3.0-S075NP	•	.750	.677	3.00	6.25	.750		3		
GMXS-3100-2.0-S100NP	•	1.00	.866	2.00	7.00	1.00		3		
GMXS-3100-3.0-S100NP	•	1.00	.866	3.00	8.00	1.00		3		
GMXS-4100-2.0-S100NP	•	1.00	.866	2.00	7.00	1.00		4		
GMXS-4100-3.0-S100NP	•	1.00	.866	3.00	8.00	1.00		4		
GMXS-5125-3.0-S125NP	•	1.25	1.14	3.00	5.50	1.25		5		
GMXS-5125-4.75-S125NP	•	1.25	1.14	4.75	8.00	1.25		5		

Note: All cutters are supplied without inserts or wrenches.

GMX Style



Specifications - Metric

CATALOG NUMBER	STK	DIMENSIONS				INSERT	Q	PARTS	
		Dc	l2	L	d			Screw	Wrench
GMX-2016-30-S16	•	16	30	100	16	ENMU100412ZER-**	2	TSW-2567H	T-08
GMX-2016-50-S16	•	16	50	150	16		2		
GMX-3020-50-S20	•	20	50	130	20		3		
GMX-3020-80-S20	•	20	80	160	20		3		
GMX-4025-60-S25	•	25	60	140	25		4		
GMX-4025-100-S25	•	25	100	180	25		4		
GMX-5032-70-S32	•	32	70	150	32		5		
GMX-5032-120-S32	•	32	120	200	32		5		

Note: All cutters are supplied without inserts or wrenches.