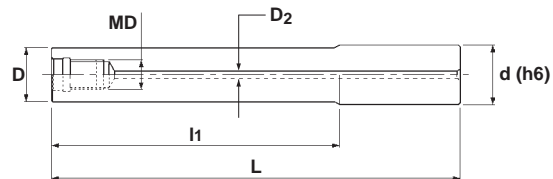


INCH

Modular Head Holders

Modular Head Holders
MSN Type
Solid Carbide with coolant thru



Specifications

CATALOG NUMBER	STK	DIMENSIONS					
		D	I1	L	d	MD	D2
MSN-M6-0.5-S050C	•	.452	.500	2.50	.500	M6	.118
MSN-M6-1.0-S050C	•	.452	1.00	3.15	.500	M6	.118
MSN-M6-2.0-S050C	•	.452	2.00	3.93	.500	M6	.118
MSN-M6-3.0-S050C	•	.452	3.00	5.12	.500	M6	.118
MSN-M8-0.5-S062C	•	.591	.500	3.50	.625	M8	.157
MSN-M8-1.0-S062C	•	.591	1.00	4.00	.625	M8	.157
MSN-M8-2.0-S062C	•	.591	2.00	5.00	.625	M8	.157
MSN-M8-4.0-S062C	•	.591	4.00	7.00	.625	M8	.157
MSN-M8-6.0-S062C	•	.591	6.00	9.00	.625	M8	.157
MSN-M10-0.5-S075C	•	.728	.500	3.50	.750	M10	.157
MSN-M10-1.0-S075C	•	.728	1.00	4.00	.750	M10	.157
MSN-M10-2.0-S075C	•	.728	2.00	5.00	.750	M10	.157
MSN-M10-3.0-S075C	•	.728	3.00	6.00	.750	M10	.157
MSN-M10-4.0-S075C	•	.728	4.00	7.00	.750	M10	.157
MSN-M10-5.0-S075C	•	.728	5.00	8.00	.750	M10	.157
MSN-M10-6.0-S075C	•	.728	6.00	9.00	.750	M10	.157
MSN-M12-0.5-S100C	•	.945	.500	3.50	1.00	M12	.236
MSN-M12-1.0-S100C	•	.945	1.00	4.00	1.00	M12	.236
MSN-M12-2.0-S100C	•	.945	2.00	5.00	1.00	M12	.236
MSN-M12-3.0-S100C	•	.945	3.00	6.00	1.00	M12	.236
MSN-M12-4.0-S100C	•	.945	4.00	7.00	1.00	M12	.236
MSN-M12-5.0-S100C	•	.945	5.00	8.00	1.00	M12	.236
MSN-M12-6.0-S100C	•	.945	6.00	9.00	1.00	M12	.236
MSN-M12-8.0-S100C	•	.945	8.00	11.00	1.00	M12	.236
MSN-M16-0.5-S125C	•	1.14	.500	3.50	1.25	M16	.315
MSN-M16-1.0-S125C	•	1.14	1.00	4.00	1.25	M16	.315
MSN-M16-2.0-S125C	•	1.14	2.00	5.00	1.25	M16	.315
MSN-M16-4.0-S125C	•	1.14	4.00	7.00	1.25	M16	.315
MSN-M16-6.0-S125C	•	1.14	6.00	9.00	1.25	M16	.315
MSN-M16-8.0-S125C	•	1.14	8.00	11.00	1.25	M16	.315

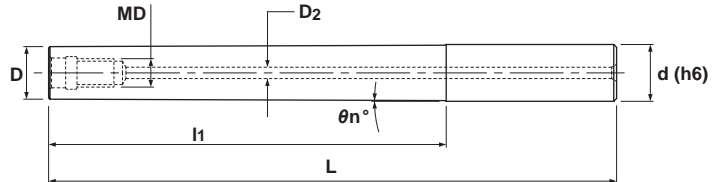
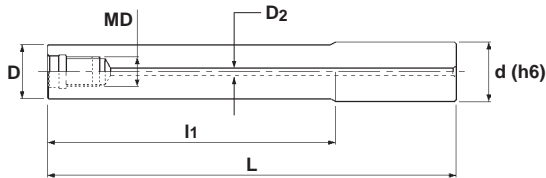
Modular Head Holders

METRIC

Modular Head Holders

MSN Type

Solid Carbide with coolant thru


Fig. 2


Specifications

CATALOG NUMBER	STK	DIMENSIONS							FIG.
		D	l1	L	d	θ_n°	MD	D2	
MSN-M6-12-S10C	•	9.7	12	60	10	-	M6	3	1
MSN-M6-30-S10C	•	9.7	30	80	10	-	M6	3	1
MSN-M6-50-S10C	•	9.7	50	100	10	-	M6	3	1
MSN-M6-80-S10C	•	9.7	80	130	10	-	M6	3	1
MSN-M6-15-S12C	•	11.5	15	60	12	-	M6	3	1
MSN-M6-30-S12C	•	11.5	30	80	12	-	M6	3	1
MSN-M6-35T-S12C	•	9.5	35	92	12	3°	M6	3	2
MSN-M6-50-S12C	•	11.5	50	100	12	-	M6	3	1
MSN-M6-57T-S12C	•	9.5	57	114	12	2°	M6	3	2
MSN-M6-65T-S16C	•	11.2	65	125	16	3°30'	M6	3	2
MSN-M6-80-S12C	•	11.5	80	130	12	-	M6	3	1
MSN-M6-15-S16C	•	13.5	15	60	16	-	M6	3	1
MSN-M6-30-S16C	•	13.5	30	80	16	-	M6	3	1
MSN-M6-50-S16C	•	13.5	50	100	16	-	M6	3	1
MSN-M6-80-S16C	•	13.5	80	130	16	-	M6	3	1
MSN-M8-20-S16C	•	15.5	20	75	16	-	M8	4	1
MSN-M8-40-S16C	•	15.5	40	95	16	-	M8	4	1
MSN-M8-40T-S20C	•	14.5	40	100	20	7°	M8	4	2
MSN-M8-77T-S20C	•	14.5	77	143	20	3°30'	M8	4	2
MSN-M8-80-S16C	•	15.5	80	135	16	-	M8	4	1
MSN-M8-120-S16C	•	15.5	120	175	16	-	M8	4	1
MSN-M8-152-S16C	•	15.5	152	207	16	-	M8	4	1
MSN-M10-20-S20C	•	19.5	20	80	20	-	M10	6	1
MSN-M10-40-S20C	•	19.5	40	100	20	-	M10	4	1
MSN-M10-40T-S20C	•	18.5	40	100	20	0°43'	M10	4	2
MSN-M10-70-S20C	•	19.5	70	130	20	-	M10	4	1
MSN-M10-85T-S25C	•	18.5	85	161	25	4°	M10	4	2
MSN-M10-90-S20C	•	19.5	90	150	20	-	M10	4	1
MSN-M10-90T-S20C	•	18.5	90	150	20	0°19'	M10	4	2
MSN-M10-140-S20C	•	19.5	140	200	20	-	M10	4	1
MSN-M10-140T-S20C	•	18.5	140	200	20	0°12'	M10	4	2
MSN-M10-160-S20C	•	19.5	160	220	20	-	M10	4	1
MSN-M10-210-S20C	•	19.5	210	270	20	-	M10	4	1

METRIC

Modular Head Holders

Modular Head Holders
 MSN Type
 Solid Carbide with coolant thru



Fig. 1

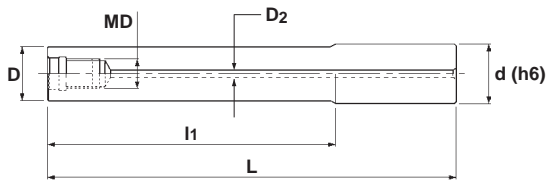
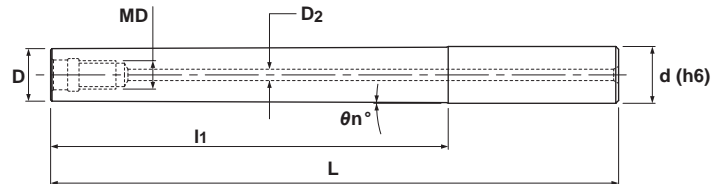


Fig. 2



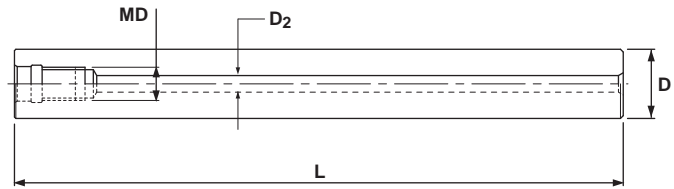
Specifications

CATALOG NUMBER	STK	DIMENSIONS							FIG.
		D	l1	L	d	θ_n°	MD	D2	
MSN-M12-25-S25C	•	24	25	90	25	-	M12	6	1
MSN-M12-55-S25C	•	24	55	120	25	-	M12	6	1
MSN-M12-100T-S32C	•	23.5	100	180	32	4°	M12	6	2
MSN-M12-105-S25C	•	24	105	170	25	-	M12	6	1
MSN-M12-135-S25C	•	24	135	215	25	-	M12	6	1
MSN-M12-155-S25C	•	24	155	220	25	-	M12	6	1
MSN-M12-200-S25C	•	24	200	265	25	-	M12	6	1
MSN-M16-25-S32C	•	29	25	90	32	-	M16	8	1
MSN-M16-55-S32C	•	29	55	120	32	-	M16	8	1
MSN-M16-77-S32C	•	29	77	157	32	-	M16	8	1
MSN-M16-97-S32C	•	29	97	177	32	-	M16	8	1
MSN-M16-105-S32C	•	29	105	170	32	-	M16	8	1
MSN-M16-117T-S32C	•	29	117	197	32	1°15'	M16	8	2
MSN-M16-127-S32C	•	29	127	207	32	-	M16	8	1
MSN-M16-127T-S32C	•	29	127	207	32	1°	M16	8	2
MSN-M16-155-S32C	•	29	155	220	32	-	M16	8	1
MSN-M16-177-S32C	•	29	177	257	32	-	M16	8	1
MSN-M16-177T-S32C	•	29	177	257	32	0°45'	M16	8	2
MSN-M16-195-S32C	•	29	195	260	32	-	M16	8	1
MSN-M16-197T-S32C	•	29	197	277	32	0°45'	M16	8	2
MSN-M16-225-S32C	•	29	225	290	32	-	M16	8	1
MSN-M16-245-S32C	•	29	245	310	32	-	M16	8	1
MSN-M16-295-S32C	•	29	295	360	32	-	M16	8	1

Modular Head Holders

METRIC

Modular Head Holders
MSN Type - Straight
Solid Carbide with coolant thru



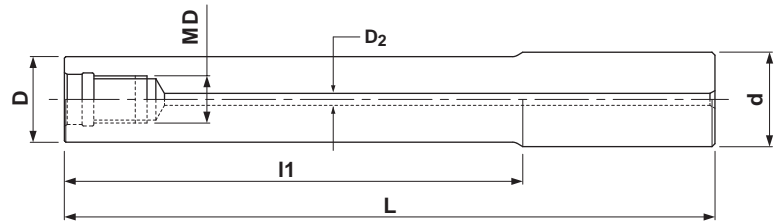
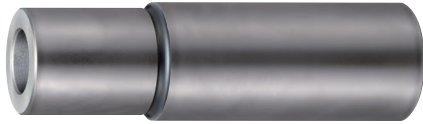
Specifications

CATALOG NUMBER	STK	DIMENSIONS			
		D	L	MD	D2
MSN-M6-67S-S9.8C	•	9.8	67	M6	3
MSN-M6-107S-S9.8C	•	9.8	107	M6	3
MSN-M6-82S-S10C	•	10	82	M6	3
MSN-M6-122S-S10C	•	10	122	M6	3
MSN-M6-80S-S11.8C	•	11.8	80	M6	3
MSN-M6-120S-S11.8C	•	11.8	120	M6	3
MSN-M6-90S-S12C	•	12	90	M6	3
MSN-M6-130S-S12C	•	12	130	M6	3
MSN-M8-87S-S14C	•	14	87	M8	4
MSN-M8-137S-S14C	•	14	137	M8	4
MSN-M8-97S-S15C	•	15	97	M8	4
MSN-M8-147S-S15C	•	15	147	M8	4
MSN-M8-197S-S15C	•	15	197	M8	4
MSN-M8-107S-S16C	•	16	107	M8	4
MSN-M8-157S-S16C	•	16	157	M8	4
MSN-M10-130S-S18C	•	18	130	M10	4
MSN-M10-190S-S18C	•	18	190	M10	4
MSN-M10-240S-S18C	•	18	240	M10	4
MSN-M10-130S-S20C	•	20	130	M10	4
MSN-M10-190S-S20C	•	20	190	M10	4
MSN-M10-250S-S20C	•	20	250	M10	4
MSN-M12-185S-S23C	•	23	185	M12	6
MSN-M12-265S-S23C	•	23	265	M12	6
MSN-M12-185S-S24C	•	24	185	M12	6
MSN-M12-265S-S24C	•	24	265	M12	6
MSN-M12-145S-S25C	•	25	145	M12	6
MSN-M12-215S-S25C	•	25	215	M12	6
MSN-M12-285S-S25C	•	25	285	M12	6
MSN-M16-160S-S28C	•	28	160	M16	8
MSN-M16-230S-S28C	•	28	230	M16	8
MSN-M16-310S-S28C	•	28	310	M16	8
MSN-M16-157S-S32C	•	32	157	M16	8
MSN-M16-217S-S32C	•	32	217	M16	8
MSN-M16-287S-S32C	•	32	287	M16	8
MSN-M16-357S-S32C	•	32	357	M16	8

INCH
METRIC

Modular Head Holders

Modular Head Holders
 MGN Type
 G-Body with coolant thru



Specifications - Inch

CATALOG NUMBER	STK	DIMENSIONS					
		D	I1	L	d	MD	D2
MGN-M6-0.5-S050	•	.452	.500	2.50	.500	M6	.118
MGN-M6-1.0-S050	•	.452	1.00	3.15	.500	M6	.118
MGN-M6-2.0-S050	•	.452	2.00	3.93	.500	M6	.118
MGN-M8-0.5-S062	•	.591	.500	3.50	.625	M8	.157
MGN-M8-1.0-S062	•	.591	1.00	4.00	.625	M8	.157
MGN-M8-2.0-S062	•	.591	2.00	5.00	.625	M8	.157
MGN-M10-0.5-S075	•	.728	.500	3.50	.750	M10	.157
MGN-M10-1.0-S075	•	.728	1.00	4.00	.750	M10	.157
MGN-M10-2.0-S075	•	.728	2.00	5.00	.750	M10	.157
MGN-M12-0.5-S100	•	.945	.500	3.50	1.00	M12	.236
MGN-M12-1.0-S100	•	.945	1.00	4.00	1.00	M12	.236
MGN-M12-2.0-S100	•	.945	2.00	5.00	1.00	M12	.236
MGN-M12-3.0-S100	•	.945	3.00	6.00	1.00	M12	.236
MGN-M16-0.5-S125	•	1.14	.500	3.50	1.25	M16	.315
MGN-M16-1.0-S125	•	1.14	1.00	4.00	1.25	M16	.315
MGN-M16-2.0-S125	•	1.14	2.00	5.00	1.25	M16	.315
MGN-M16-3.0-S125	•	1.14	3.00	6.00	1.25	M16	.315

Specifications - Metric

CATALOG NUMBER	STK	DIMENSIONS					
		D	I1	L	d	MD	D2
MGN-M8-17-S16	•	15.5	17	97	16	M8	4
MGN-M10-30-S20	•	19	30	100	20	M10	4
MGN-M12-35-S25	•	24	35	105	25	M12	4
MGN-M12-85-S25	•	24	85	165	25	M12	4
MGN-M16-37-S32	•	29	37	107	32	M16	6
MGN-M16-77-S32	•	29	77	157	32	M16	6