



INCH

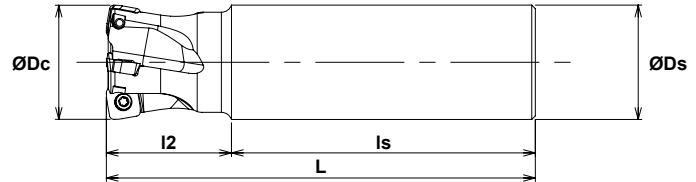
METRIC

SKS GII-09 High Feed

SKG-09 End Mills & Inserts

For heat resistant alloys, titanium alloy & hardened stainless steel.

SKGS-09 Style

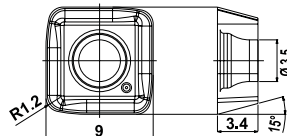
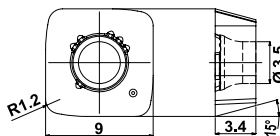


End Mill Specifications

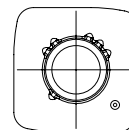
	CATALOG NUMBER	STK	DIMENSIONS					INSERT	Q	PARTS	
			ØDc	L2	Ls	L	ØDs			Screw	Wrench
INCH	SKGS-3100-2.0-09-S100NP	•	1.00	2.00	5.00	7.00	1.00	SDEW090312ZER SDET090312ZDER-SM	3	DSW-307H	T-10
	SKGS-3100-3.0-09-S100NP	•	1.00	3.00	5.00	8.00	1.00		3		
	SKGS-4125-2.0-09-S125NP	•	1.25	2.00	5.00	7.00	1.25		4		
	SKGS-4125-3.0-09-S125NP	•	1.25	3.00	5.00	8.00	1.25		4		
	SKGS-5150-3.0-09-S125NP	•	1.50	3.00	4.00	7.00	1.25		5		
	SKGS-5150-4.75-09-S125NP	•	1.50	4.75	3.25	8.00	1.25		5		
METRIC	SKGS-3025-09-30-S25+A	•	25	30	70	100	25		3		
	SKGS-4032-09-35-S32+A	•	32	35	85	120	32		4		
	SKGS-5035-09-35-S32+A	•	35	35	85	120	32		5		
	SKGS-5040-09-35-S32+A	•	40	35	85	120	32		5		
	SKGS-5042-09-35-S32+A	•	42	35	85	120	32	5			

Note: All cutters are supplied without inserts or wrenches.

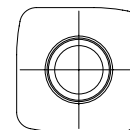
INSERTS



GRADE MARKINGS



JC7550



JC7518

CATALOG NUMBER	TOLERANCE	PVD COATED	
		JC7550	JC7518
SDEW090312ZER	E	•	•
SDET090312ZDER-SM		•	



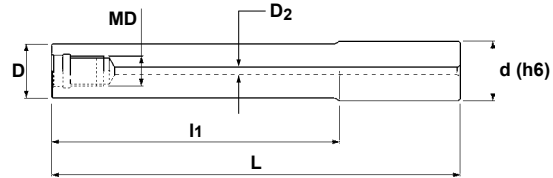
SKS-GII-09 High Feed

INCH

MODULAR HEAD HOLDERS

MSN Type

Solid Carbide with Coolant Thru



Specifications - Carbide

CATALOG NUMBER	STK	DIMENSIONS					
		D	l1	L	d	MD	D2
MSN-M12-0.5-S100C	•	.945	.500	3.50	1.00	M12	.236
MSN-M12-1.0-S100C	•	.945	1.00	4.00	1.00	M12	.236
MSN-M12-2.0-S100C	•	.945	2.00	5.00	1.00	M12	.236
MSN-M12-3.0-S100C	•	.945	3.00	6.00	1.00	M12	.236
MSN-M12-4.0-S100C	•	.945	4.00	7.00	1.00	M12	.236
MSN-M12-5.0-S100C	•	.945	5.00	8.00	1.00	M12	.236
MSN-M12-6.0-S100C	•	.945	6.00	9.00	1.00	M12	.236
MSN-M12-8.0-S100C	•	.945	8.00	11.00	1.00	M12	.236
MSN-M16-0.5-S125C	•	1.14	.500	3.50	1.25	M16	.315
MSN-M16-1.0-S125C	•	1.14	1.00	4.00	1.25	M16	.315
MSN-M16-2.0-S125C	•	1.14	2.00	5.00	1.25	M16	.315
MSN-M16-4.0-S125C	•	1.14	4.00	7.00	1.25	M16	.315
MSN-M16-6.0-S125C	•	1.14	6.00	9.00	1.25	M16	.315
MSN-M16-8.0-S125C	•	1.14	8.00	11.00	1.25	M16	.315



METRIC

SKS GII-09 High Feed

MODULAR HEAD HOLDERS

MSN Type

Solid Carbide with Coolant Thru



Fig. 1

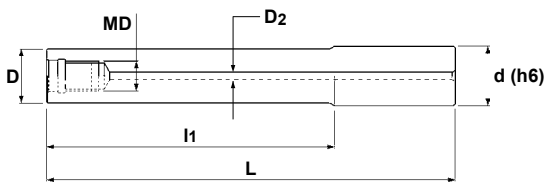
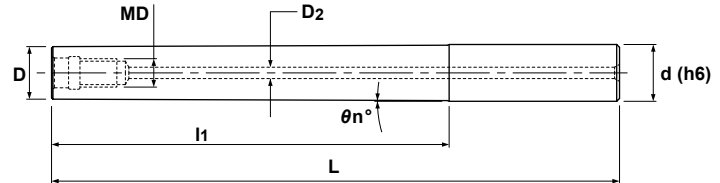


Fig. 2



Specifications

CATALOG NUMBER	STK	DIMENSIONS							FIG.
		D	l1	L	d	θn°	MD	D2	
MSN-M12-25-S25C	•	24	25	90	25	-	M12	6	1
MSN-M12-55-S25C	•	24	55	120	25	-	M12	6	1
MSN-M12-100T-S32C	•	23.5	100	180	32	2°	M12	6	2
MSN-M12-105-S25C	•	24	105	170	25	-	M12	6	1
MSN-M12-135-S25C	•	24	135	215	25	-	M12	6	1
MSN-M12-155-S25C	•	24	155	220	25	-	M12	6	1
MSN-M12-200-S25C	•	24	200	265	25	-	M12	6	1
MSN-M16-25-S32C	•	29	25	90	32	-	M16	8	1
MSN-M16-55-S32C	•	29	55	120	32	-	M16	8	1
MSN-M16-77-S32C	•	29	77	157	32	-	M16	8	1
MSN-M16-97-S32C	•	29	97	177	32	-	M16	8	1
MSN-M16-105-S32C	•	29	105	170	32	-	M16	8	1
MSN-M16-117T-S32C	•	29	117	197	32	0°38'	M16	8	2
MSN-M16-127-S32C	•	29	127	207	32	-	M16	8	1
MSN-M16-127T-S32C	•	29	127	207	32	0°30'	M16	8	2
MSN-M16-155-S32C	•	29	155	220	32	-	M16	8	1
MSN-M16-177-S32C	•	29	177	257	32	-	M16	8	1
MSN-M16-177T-S32C	•	29	177	257	32	0°23'	M16	8	2
MSN-M16-195-S32C	•	29	195	260	32	-	M16	8	1
MSN-M16-197T-S32C	•	29	197	277	32	0°23'	M16	8	2
MSN-M16-225-S32C	•	29	225	290	32	-	M16	8	1
MSN-M16-245-S32C	•	29	245	310	32	-	M16	8	1
MSN-M16-295-S32C	•	29	295	360	32	-	M16	8	1



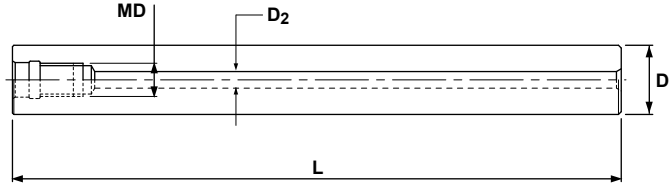
SKS-GII-09 High Feed

METRIC

MODULAR HEAD HOLDERS

MSN Type - Straight

Solid Carbide with Coolant Thru



Specifications

CATALOG NUMBER	STK	DIMENSIONS			
		D	L	MD	D2
MSN-M12-185S-S23C	•	23	185	M12	6
MSN-M12-265S-S23C	•	23	265	M12	6
MSN-M12-185S-S24C	•	24	185	M12	6
MSN-M12-265S-S24C	•	24	265	M12	6
MSN-M12-145S-S25C	•	25	145	M12	6
MSN-M12-215S-S25C	•	25	215	M12	6
MSN-M12-285S-S25C	•	25	285	M12	6
MSN-M16-160S-S28C	•	28	160	M16	8
MSN-M16-230S-S28C	•	28	230	M16	8
MSN-M16-310S-S28C	•	28	310	M16	8
MSN-M16-157S-S32C	•	32	157	M16	8
MSN-M16-217S-S32C	•	32	217	M16	8
MSN-M16-287S-S32C	•	32	287	M16	8
MSN-M16-357S-S32C	•	32	357	M16	8



INCH

METRIC

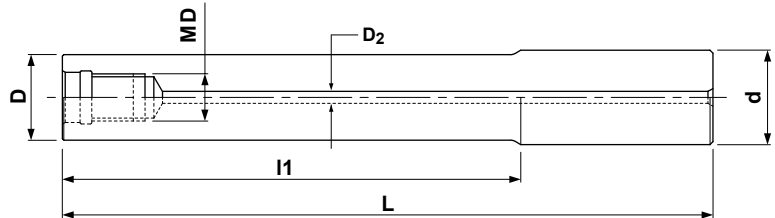
SKS GII-09 High Feed

MODULAR HEAD HOLDERS

MGN Type

G-Body with Coolant Thru

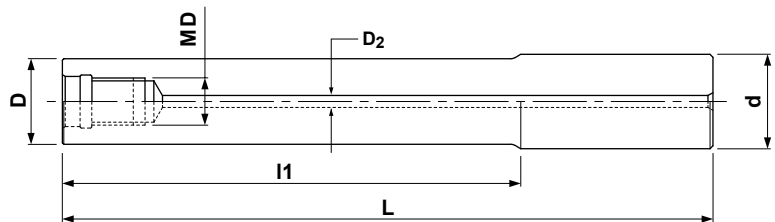
G-Body



Specifications - Inch

CATALOG NUMBER	STK	DIMENSIONS					
		D	l1	L	d	MD	D2
MGN-M12-0.5-S100	•	.945	.500	3.50	1.00	M12	.236
MGN-M12-1.0-S100	•	.945	1.00	4.00	1.00	M12	.236
MGN-M12-2.0-S100	•	.945	2.00	5.00	1.00	M12	.236
MGN-M12-3.0-S100	•	.945	3.00	6.00	1.00	M12	.236
MGN-M16-0.5-S125	•	1.14	.500	3.50	1.25	M16	.315
MGN-M16-1.0-S125	•	1.14	1.00	4.00	1.25	M16	.315
MGN-M16-2.0-S125	•	1.14	2.00	5.00	1.25	M16	.315
MGN-M16-3.0-S125	•	1.14	3.00	6.00	1.25	M16	.315

G-Body



Specifications - Metric

CATALOG NUMBER	STK	DIMENSIONS					
		D	l1	L	d	MD	D2
MGN-M12-35-S25	•	24	35	105	25	M12	4
MGN-M12-85-S25	•	24	85	165	25	M12	4
MGN-M16-37-S32	•	29	37	107	32	M16	6
MGN-M16-77-S32	•	29	77	157	32	M16	6