



# Super Diemaster

*High Efficient Indexable Radius Tool*



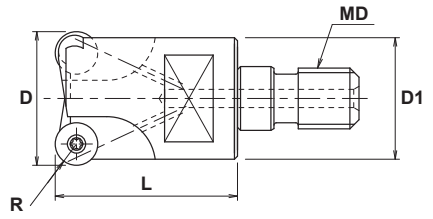
- Positive axial rake reduces cutting force.
- Double clamping system for deeper applications.
- DH103 grade available for 60 HRC material.
- Uncoated insert for machining aluminum.
- G-Body improves durability and tool life by 30% or more over conventional style.



# Super Diemaster

**INCH**

## MODULAR HEAD SDH Type



### Specifications

CATALOG NUMBER	STK	DIMENSIONS					HEAD TORQUE		INSERT	Q	PARTS	
		D	R	L	D1	MD	lbs./ft	Nm			Screw	Wrench
SDH-3075-R07-M10	•	.750	3.5	1.18	.728	M10	11.8	16	RD**07T2MO*	3	TSW-2556H	T-08SD
SDH-2100-R12-M12	•	1.00	6	1.38	.945	M12	14.7	20	RD**1204MO*	2	DSW-410H	T-15
SDH-3100-R10-M12	•	1.00	5	1.38	.945	M12	14.7	20	RD**1004MO*	3	CSW-408H	T-15
SDH-3125-R12-M16	•	1.25	6	1.69	1.14	M16	18.4	25	RD**1204MO*	3	DSW-410H	T-15
SDH-4125-R10-M16	•	1.25	5	1.69	1.14	M16	18.4	25	RD**1004MO*	4	CSW-408H	T-15
SDH-4150-R12-M16	•	1.50	6	1.69	1.25	M16	18.4	25	RD**1204MO*	4	DSW-410H	T-15
SDH-5150-R10-M16	•	1.50	5	1.69	1.25	M16	18.4	25	RD**1004MO*	5	CSW-408H	T-15

Note: Modular Head Holders on page 109.

Note: All cutters are supplied without inserts.



**METRIC**

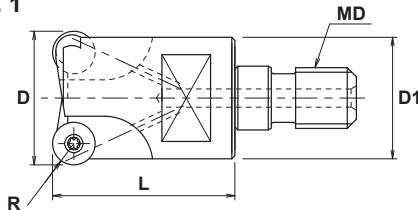
# Super Diemaster

## MODULAR HEAD SDH Type

**G-Body**



Fig. 1



**G-Body**

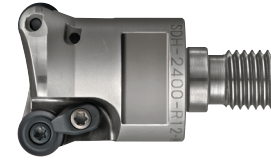
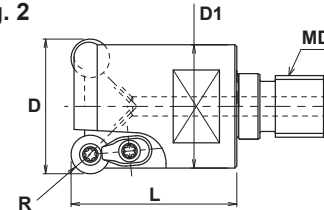


Fig. 2



### Specifications - Standard

CATALOG NUMBER	STK	DIMENSIONS					FIG.	HEAD TORQUE		INSERT	Q	PARTS		
		D	R	L	D1	MD		lbs./ft	Nm			Screw	Wrench	Other
SDH-2150-R07-M8	•	15	3.5	23	13.8	M8	1	11.8	16	RD**07T2MO*	2	TSW-2556H	T08SD	-
SDH-2160-R07-M8	•	16	3.5	23	15	M8	1	11.8	16	RD**07T2MO*	2	TSW-2556H	T08SD	-
SDH-2200-R07-M10	•	20	3.5	30	18	M10	1	11.8	16	RD**07T2MO*	2	TSW-2556H	T08SD	-
SDH-2220-R07-M10	•	22	3.5	30	20	M10	1	11.8	16	RD**07T2MO*	2	TSW-2556H	T08SD	-
SDH-2250-R10-M12	•	25	5	35	23	M12	2	14.7	20	RD**1004MO*	2	CSW-408H	T-15	DCM-18
SDH-2280-R10-M12	•	28	5	35	25	M12	2	14.7	20	RD**1004MO*	2	CSW-408H	T-15	DCM-18
SDH-2300-R10-M16	•	30	5	43	28	M16	2	18.4	25	RD**1004MO*	2	CSW-408H	T-15	DCM-18
SDH-2320-R12-M16	•	32	6	43	28	M16	2	18.4	25	RD**1204MO*	2	DSW-410H	T-15	DCM-18
SDH-3320-R10-M16	•	32	5	43	28	M16	2	18.4	25	RD**1004MO*	3	CSW-408H	T-15	DCM-18
SDH-2350-R12-M16	•	35	6	43	32	M16	2	18.4	25	RD**1204MO*	2	DSW-410H	T-15	DCM-18
SDH-3350-R10-M16	•	35	5	43	32	M16	2	18.4	25	RD**1004MO*	3	CSW-408H	T-15	DCM-18
SDH-2400-R12-M16	•	40	6	43	32	M16	2	18.4	25	RD**1204MO*	2	DSW-410H	T-15	DCM-18

Note: All cutters are supplied without inserts.

### Specifications - Fine Pitch

CATALOG NUMBER	STK	DIMENSIONS					FIG.	HEAD TORQUE		INSERT	Q	PARTS	
		D	R	L	D1	MD		lbs./ft	Nm			Screw	Wrench
SDH-3200-R07-M10	•	20	3.5	30	18	M10	1	11.8	16	RD**07T2MO*	3	TSW-2556H	T08SD
SDH-3220-R07-M10	•	22	3.5	30	20	M10	1	11.8	16	RD**07T2MO*	3	TSW-2556H	T08SD
SDH-3250-R07-M12	•	25	3.5	35	23	M12	1	14.7	20	RD**07T2MO*	3	TSW-2556H	T08SD
SDH-3250-R10-M12	•	25	5	35	23	M12	1	14.7	20	RD**1004MO*	3	CSW-408H	T-15
SDH-3280-R10-M12	•	28	5	35	25	M12	1	14.7	20	RD**1004MO*	3	CSW-408H	T-15
SDH-3300-R10-M16	•	30	5	43	28	M16	1	18.4	25	RD**1004MO*	3	CSW-408H	T-15
SDH-4300-R10-M16	•	30	5	43	28	M16	1	18.4	25	RD**1004MO*	4	CSW-408H	T-15
SDH-4320-R10-M16	•	32	5	43	28	M16	1	18.4	25	RD**1004MO*	4	CSW-408H	T-15
SDH-3350-R12-M16	•	35	6	43	32	M16	1	18.4	25	RD**1204MO*	3	DSW-410H	T-15
SDH-4350-R10-M16	•	35	5	43	32	M16	1	18.4	25	RD**1004MO*	4	CSW-408H	T-15
SDH-4400-R12-M16	•	40	6	43	32	M16	1	18.4	25	RD**1204MO*	4	DSW-410H	T-15
SDH-5420-R10-M16	•	42	5	43	32	M16	1	18.4	25	RD**1004MO*	5	CSW-408H	T-15

Note: Modular Head Holders on page 109.

Note: All cutters are supplied without inserts.