



Super Diemaster

INCH

FACE MILL HDM Type



Fig. 1 - Standard Pitch

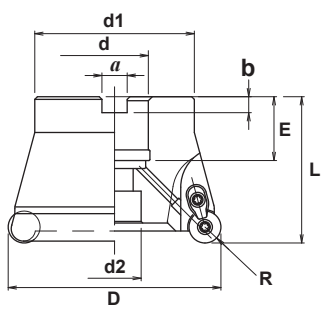
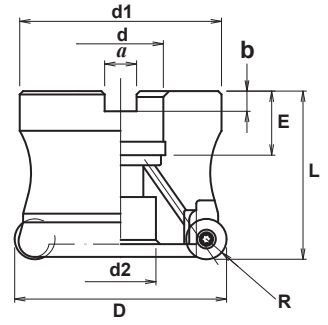


Fig. 2 - Fine Pitch



Specifications

CATALOG NUMBER	STK	DIMENSIONS										FIG.	INSERT	Q	PARTS		
		D	R	L	d	d1	a	b	E	d2	Screw				Wrench	Other	
HDM-5200-75R-12	•	2.00	6	2.00	.750	1.85	.197	.319	.750	.63	2	RD**1204MO*	5	DSW-410H	A-15T	-	
HDM-4200-75R-16	•	2.00	8	2.00	.750	1.85	.197	.319	.750	.63	2	RD**1606MO*	4	DSW-4512H	A-20	-	
HDM-7300-125R-12	•	3.00	6	2.75	1.25	2.85	.315	.500	1.26	1.02	2	RD**1204MO*	7	DSW-410H	A-15T	-	
HDM-6300-125R-16	•	3.00	8	2.75	1.25	2.85	.315	.500	1.26	1.02	2	RD**1606MO*	6	DSW-4512H	A-20	-	
HDM-5300-125R-20	•	3.00	10	2.75	1.25	2.85	.315	.500	1.26	1.02	1	RD**2006MO*	5	DSW-4512H	A-20	DCM-17	
HDM-9400-150R-12	•	4.00	6	2.75	1.50	3.78	.393	.626	1.45	1.26	2	RD**1204MO*	9	DSW-410H	A-15T	-	
HDM-7400-150R-16	•	4.00	8	2.75	1.50	3.78	.393	.626	1.45	1.26	2	RD**1606MO*	7	DSW-4512H	A-20	-	
HDM-6400-150R-20	•	4.00	10	2.75	1.50	3.78	.393	.626	1.45	1.26	1	RD**2006MO*	6	DSW-4512H	A-20	DCM-17	

Note: All cutters are supplied without inserts.

ENDMILL HDM Type



Fig. 1

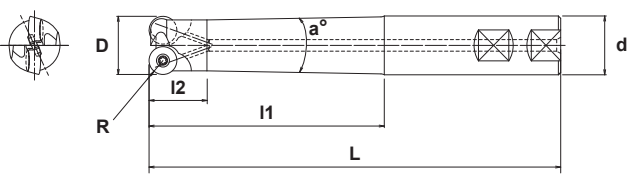
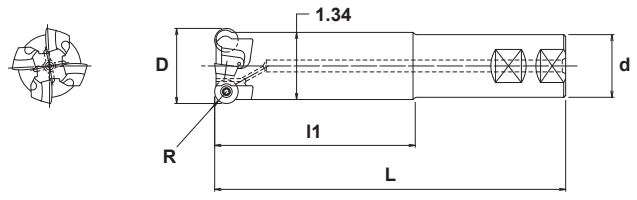


Fig. 2



Specifications

CATALOG NUMBER	STK	DIMENSIONS								FIG.	INSERT	Q	PARTS	
		D	R	L	I1	I2	d	a°	Screw				Wrench	
HDM-2100-2.0-S100-12	•	1.00	6	5.00	2.00	.98	1.00	4°	1	RD**1204MO*	2	DSW-410H	T-15	
HDM-2100-4.0-S100-12	•	1.00	6	7.00	4.00	.98	1.00	2°	1	RD**1204MO*	2	DSW-410H	T-15	
HDM-2100-6.0-S125-12	•	1.00	6	9.00	6.00	.98	1.25	4°	1	RD**1204MO*	2	DSW-410H	T-15	
HDM-3125-2.0-S125-12	•	1.25	6	5.00	2.00	1.18	1.25	6°	1	RD**1204MO*	3	DSW-410H	T-15	
HDM-3125-4.0-S125-12	•	1.25	6	7.00	4.00	1.18	1.25	2°	1	RD**1204MO*	3	DSW-410H	T-15	
HDM-3125-6.0-S125-12	•	1.25	6	9.00	6.00	1.18	1.25	1°	1	RD**1204MO*	3	DSW-410H	T-15	
HDM-4150-2.0-S125-12	•	1.50	6	5.00	2.00	-	1.25	-	2	RD**1204MO*	4	DSW-410H	T-15	
HDM-4150-4.0-S125-12	•	1.50	6	7.00	4.00	-	1.25	-	2	RD**1204MO*	4	DSW-410H	T-15	
HDM-4150-6.0-S125-12	•	1.50	6	9.00	6.00	-	1.25	-	2	RD**1204MO*	4	DSW-410H	T-15	

Note: All cutters are supplied without inserts.