



# Super Diemaster

**INCH**

## FACE MILL HDM Type



Fig. 1 - Standard Pitch

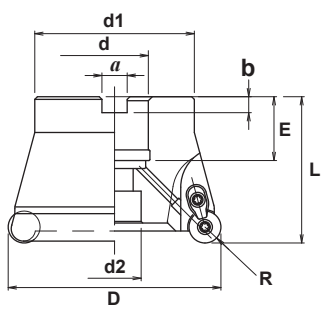
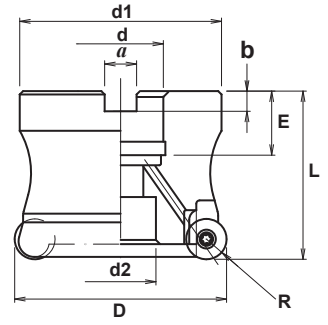


Fig. 2 - Fine Pitch



### Specifications

CATALOG NUMBER	STK	DIMENSIONS										FIG.	INSERT	Q	PARTS		
		D	R	L	d	d1	a	b	E	d2	Screw				Wrench	Other	
HDM-5200-75R-12	•	2.00	6	2.00	.750	1.85	.197	.319	.750	.63	2	RD**1204MO*	5	DSW-410H	A-15T	-	
HDM-4200-75R-16	•	2.00	8	2.00	.750	1.85	.197	.319	.750	.63	2	RD**1606MO*	4	DSW-4512H	A-20	-	
HDM-7300-125R-12	•	3.00	6	2.75	1.25	2.85	.315	.500	1.26	1.02	2	RD**1204MO*	7	DSW-410H	A-15T	-	
HDM-6300-125R-16	•	3.00	8	2.75	1.25	2.85	.315	.500	1.26	1.02	2	RD**1606MO*	6	DSW-4512H	A-20	-	
HDM-5300-125R-20	•	3.00	10	2.75	1.25	2.85	.315	.500	1.26	1.02	1	RD**2006MO*	5	DSW-4512H	A-20	DCM-17	
HDM-9400-150R-12	•	4.00	6	2.75	1.50	3.78	.393	.626	1.45	1.26	2	RD**1204MO*	9	DSW-410H	A-15T	-	
HDM-7400-150R-16	•	4.00	8	2.75	1.50	3.78	.393	.626	1.45	1.26	2	RD**1606MO*	7	DSW-4512H	A-20	-	
HDM-6400-150R-20	•	4.00	10	2.75	1.50	3.78	.393	.626	1.45	1.26	1	RD**2006MO*	6	DSW-4512H	A-20	DCM-17	

Note: All cutters are supplied without inserts.

## ENDMILL HDM Type



Fig. 1

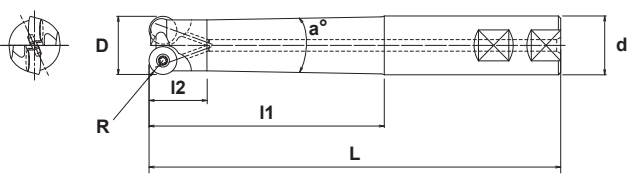
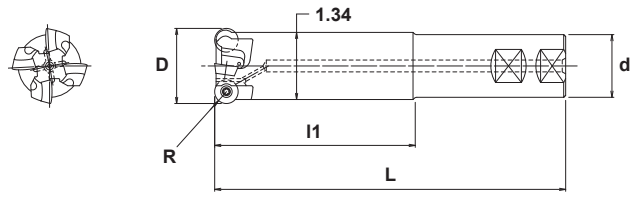


Fig. 2



### Specifications

CATALOG NUMBER	STK	DIMENSIONS								FIG.	INSERT	Q	PARTS	
		D	R	L	I1	I2	d	a°	Screw				Wrench	
HDM-2100-2.0-S100-12	•	1.00	6	5.00	2.00	.98	1.00	4°	1	RD**1204MO*	2	DSW-410H	T-15	
HDM-2100-4.0-S100-12	•	1.00	6	7.00	4.00	.98	1.00	2°	1	RD**1204MO*	2	DSW-410H	T-15	
HDM-2100-6.0-S125-12	•	1.00	6	9.00	6.00	.98	1.25	4°	1	RD**1204MO*	2	DSW-410H	T-15	
HDM-3125-2.0-S125-12	•	1.25	6	5.00	2.00	1.18	1.25	6°	1	RD**1204MO*	3	DSW-410H	T-15	
HDM-3125-4.0-S125-12	•	1.25	6	7.00	4.00	1.18	1.25	2°	1	RD**1204MO*	3	DSW-410H	T-15	
HDM-3125-6.0-S125-12	•	1.25	6	9.00	6.00	1.18	1.25	1°	1	RD**1204MO*	3	DSW-410H	T-15	
HDM-4150-2.0-S125-12	•	1.50	6	5.00	2.00	-	1.25	-	2	RD**1204MO*	4	DSW-410H	T-15	
HDM-4150-4.0-S125-12	•	1.50	6	7.00	4.00	-	1.25	-	2	RD**1204MO*	4	DSW-410H	T-15	
HDM-4150-6.0-S125-12	•	1.50	6	9.00	6.00	-	1.25	-	2	RD**1204MO*	4	DSW-410H	T-15	

Note: All cutters are supplied without inserts.



**METRIC**

# Super Diemaster

## FACE MILL HDM Type



Fig. 1 - Standard Pitch

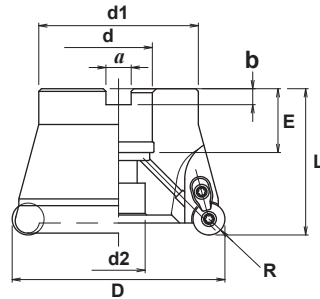
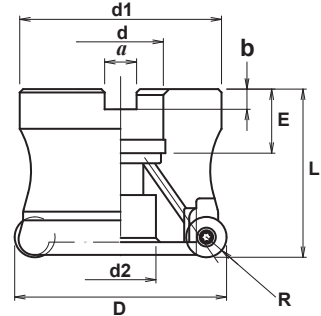


Fig. 2 - Fine Pitch



### Specifications

CATALOG NUMBER	STK	DIMENSIONS										FIG.	INSERT	Q	PARTS		
		D	R	L	d	d1	a	b	E	d2	Screw				Wrench	Other	
HDM-3050-12R	•	50	6	50	22.225	47	8.4	5	20	16.5	1	RD**1204MO*	3	DSW-410H	A-15T	DCM-18	
HDM-3050-12R-22	•	50	6	50	22	47	10.4	6.3	20	16.5	1						
HDM-3050-16R	•	50	8	55	22.225	47	8.4	5	20	16.5	1	RD**1606MO*	3	DSW-4512H	A-20	DCM-17	
HDM-3050-16R-22	•	50	8	55	22	47	10.4	6.3	20	16.5	1						
HDM-4050-16R	•	50	8	55	22.225	47	8.4	5	20	16.5	2	RD**1606MO*	4	DSW-4512H	A-20	-	
HDM-4050-16R-22	•	50	8	55	22	47	10.4	6.3	20	16.5	2						
HDM-5050-12R	•	50	6	50	22.225	47	8.4	5	20	16.5	2	RD**1204MO*	5	DSW-410H	A-15T	-	
HDM-5050-12R-22	•	50	6	50	22	47	10.4	6.3	20	16.5	2						
HDM-5050-12R-19.05	•	50	6	50	19.05	47	5	8.1	19.05	16	2						
HDM-4052-16R-22	•	52	8	55	22	47	10.4	6.3	20	16.5	2	RD**1606MO*	4	DSW-4512H	A-20	-	
HDM-5052-12R-22	•	52	6	50	22	47	10.4	6.3	20	16.5	2	RD**1204MO*	5	DSW-410H	A-15T	-	
HDM-4063-12R	•	63	6	50	22.225	60	8.4	5	20	16.5	1	RD**1204MO*	4	DSW-410H	A-15T	DCM-18	
HDM-4063-12R-22	•	63	6	50	22	60	10.4	6.3	20	16.5	1						
HDM-4063-16R	•	63	8	50	22.225	60	8.4	5	20	16.5	1	RD**1606MO*	4	DSW-4512H	A-20	DCM-17	
HDM-4063-16R-22	•	63	8	50	22	60	10.4	6.3	20	16.5	1						
HDM-5063-16R	•	63	8	50	22.225	60	8.4	5	20	16.5	2	RD**1606MO*	5	DSW-4512H	A-20	-	
HDM-5063-16R-27	•	63	8	50	27	60	12.4	7	22	20	2						
HDM-6063-12R	•	63	6	50	22.225	60	8.4	5	20	16.5	2	RD**1204MO*	6	DSW-410H	A-15T	-	
HDM-6063-12R-27	•	63	6	50	27	60	12.4	7	22	20	2						
HDM-6063-12R-25.4	•	63	6	50	25.4	60	6	9.5	19.05	21	2						

Note: All cutters are supplied without inserts.



# Super Diemaster

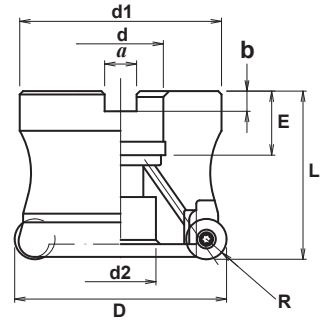
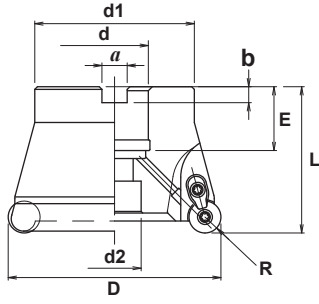
**METRIC**

## FACE MILL HDM Type



Fig. 1 - Standard Pitch

Fig. 2 - Fine Pitch



### Specifications

CATALOG NUMBER	STK	DIMENSIONS									FIG.	INSERT	Q	PARTS		
		D	R	L	d	d1	a	b	E	d2				Screw	Wrench	Other
HDM-5066-16R-27	•	66	8	50	27	60	12.4	7	22	20	2	RD**1606MO*	5	DSW-4512H	A-20	-
HDM-6066-12R-27	•	66	6	50	27	60	12.4	7	22	20	2	RD**1204MO*	6	DSW-410H	A-15T	-
HDM-4080-12R-25.4	•	80	6	55	25.4	60	9.5	6	24	20	1	RD**1204MO*	4	DSW-410H	A-15T	DCM-18
HDM-4080-12R	•	80	6	70	31.75	74	12.7	8	32	26	1	RD**1204MO*	4	DSW-410H	A-15T	DCM-18
HDM-4080-16R-25.4	•	80	8	55	25.4	60	9.5	6	24	20	1	RD**1606MO*	4	DSW-4512H	A-20	DCM-17
HDM-4080-16R	•	80	8	70	31.75	76	12.7	8	32	26	1	RD**1606MO*	4	DSW-4512H	A-20	DCM-17
HDM-5080-16R-25.4	•	80	8	55	25.4	60	9.5	6	24	20	1	RD**1606MO*	5	DSW-4512H	A-20	DCM-17
HDM-5080-20	•	80	10	70	31.75	63.5	12.7	8	32	26	1	RD**2006MO*	5	DSW-4512H	A-20	DCM-17
HDM-6080-16R-27	•	80	8	55	27	76	12.4	7	22	20	2	RD**1606MO*	6	DSW-4512H	A-20	-
HDM-6080-20R-1.25	•	80	10	70	31.75	63.5	12.7	8	32	26	1	RD**2006MO*	6	DSW-4512H	A-20	DCM-17
HDM-6080-20R-27	•	80	10	55	27	60	12.4	7	22	20	1	RD**2006MO*	6	DSW-4512H	A-20	DCM-17
HDM-7080-12R-27	•	80	6	55	27	76	12.4	7	22	20	2	RD**1204MO*	7	DSW-410H	A-15T	-
HDM-6100-16R	•	100	8	70	31.75	96	12.7	8	32	26	1	RD**1606MO*	6	DSW-4512H	A-20	DCM-17
HDM-8125-16R	•	125	8	70	38.1	100	15.9	10	37	32	1	RD**1606MO*	8	DSW-4512H	A-20	DCM-17
HDM-9160-16R	※	160	8	80	50.8	120	19	11	39	39	1	RD**1606MO*	9	DSW-4512H	A-20	DCM-17

※ Special Make

Note: All cutters are supplied without inserts.