



**INCH**

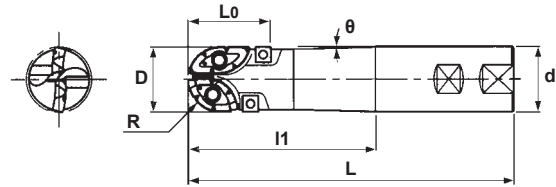
# Swing Ball

## END MILLS SWB Type

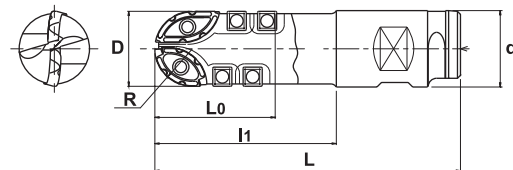
**G-Body**



**Weldon Shank**  
Fig. 1



**Combination Shank**  
Fig. 2



### Specifications - Standard Length of Cut

CATALOG NUMBER	STK	DIMENSIONS						FIG.	θ	INSERT	PARTS	
		D	R	L	L0	L1	d				Screw	Wrench
SWB-2075-4	•	.750	.375	4.03	1.14	2.00	.750	1	-	SWB2075HME (1) SWB2075HSE (1) ZCMT100308R (2)	DSW-307H (2)	T-10SD
SWB-2075-6	•	.750	.375	6.03	1.14	3.75	1.00	1	6°		ESW-206 (2)	T-08SD
SWB-2075-100-8	•	.750	.375	8.00	1.14	5.72	1.00	1	2°			
SWB-2100-100-5	•	1.00	.500	5.00	1.40	2.75	1.00	1	-	SWB2100HME (1) SWB2100HSE (1) ZCMT100308R (2)	DSW-4085 (2) ESW-206 (2)	T-15 T-08SD
SWB-2100-100-8	•	1.00	.500	8.00	1.40	3.00	1.00	1	-			
SWB-2100-100-10	•	1.00	.500	10.00	1.40	5.00	1.00	1	-			
SWB-2100-125-6.5	•	1.00	.500	6.50	1.40	4.25	1.25	1	-			
SWB-2100-125-8	•	1.00	.500	8.00	1.40	5.50	1.25	1	7° 30'			
SWB-2125-125-6	•	1.25	.625	6.00	1.67	3.72	1.25	1	-	SWB2125HME (1) SWB2125HSE (1) IM-SP32GS (2)	DSW-509 (2) CSW-407 (2)	A-20 T-15
SWB-2125-150-8	•	1.25	.625	8.00	1.67	5.31	1.50	1	2°			
SWB-2125-150-10	•	1.25	.625	10.00	1.67	6.75	1.50	1	1° 30'			
SWB-2150-150-6	•	1.50	.750	6.00	1.97	3.31	1.50	1	-	SWB2150HMNE (1) SWB2150HSNE (1) IM-SP32GS (2)	TSW-511 (2) CSW-407 (2)	A-20 T-15
SWB-2150-200-8	•	1.50	.750	8.00	1.97	4.75	2.00	1	30°			

Note: All cutters are supplied without inserts.

### Specifications - Longer Length of Cut

CATALOG NUMBER	STK	DIMENSIONS						FIG.	θ	INSERT	PARTS	
		D	R	L	L0	L1	d				Screw	Wrench
SWB4-2200-8-PN200	•	2.00	1.00	8.00	3.15	4.75	2.00 w/ Putnam Lock	2	-	SWB2200HMNE (1) SWB2200HSNE (1) IM-SP43GS (4)	HSW-614H (2)	T-30
SWB6-2200-10-PN200	•	2.00	1.00	10.00	3.93	6.75	2.00 w/ Putnam Lock	2	-		EXW-510 (4)	A-20
SWB6-2200-12-PN200	•	2.00	1.00	12.00	3.93	8.75	2.00 w/ Putnam Lock	2	-		EXW-510 (6)	A-20

Note: All cutters are supplied without inserts.

May also use inserts for welds or hardened material.



# Swing Ball End Mills - Metric

**METRIC**



Fig. 1

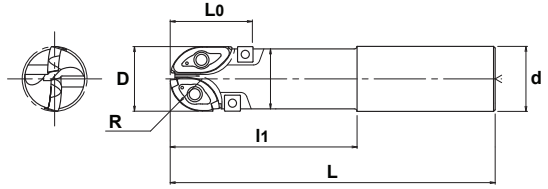


Fig. 2

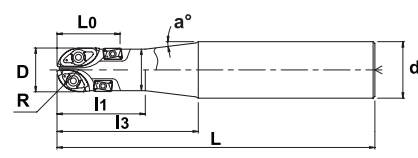


Fig. 3

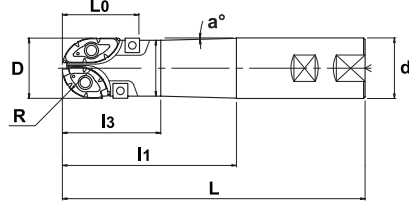


Fig. 4

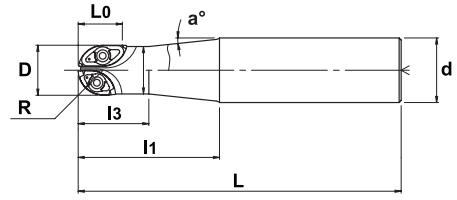


Fig. 5

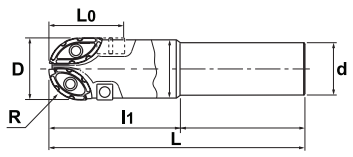


Fig. 6

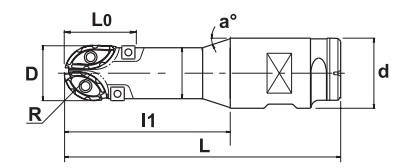


Fig. 9

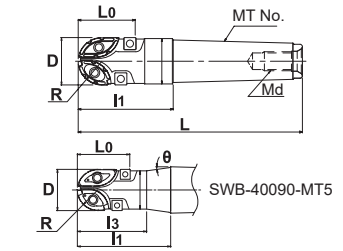


Fig. 7

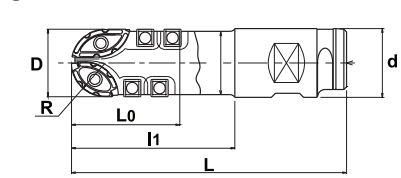
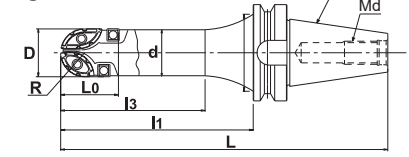


Fig. 8



Md = M24 x 3

Md = MT4 = M16 x 2  
MT5 = M20 x 2.5

## Specifications - Straight Shank

CATALOG NUMBER	STK	DIMENSIONS								FIG.	INSERT	PARTS	
		D	R	L	L0	I1	I3	d	a°			Screw	Wrench
SWBS3242S32-G*	•	32	16	180	44	60	-	32	-	1	SWB232HM-G (1) SWB232HS-G (1) ZCMT100308R (2)	TSW-511 (2) ESW-206 (2)	A-20 A-08SD
SWBM3242S32-G*	•	32	16	220	44	60	-	32	-	1			
SWBL3242S32-G	•	32	16	250	44	60	-	32	-	1			
SWBE3242S32-G	•	32	16	300	44	60	-	32	-	1			
SWB-32070-W32-G	•	32	16	150	44	70	-	32	-	3			
SWB-32090-W32-G	•	32	16	170	44	90	-	32	-	3			
SWB-32115-W40-G	•	32	16	200	44	115	50	40	4°10'	3			
SWB-32165-W40-G	•	32	16	250	44	165	50	40	2°20'	3			
SWB-32070-MT4-G	•	32	16	179	44	70	-	MT4	-	9			
SWB-32100-MT4-G	•	32	16	209	44	100	-	MT4	-	9			

\*G-Body

Note: All cutters are supplied without inserts.

**METRIC**

# Swing Ball End Mills - Metric

## Specifications - Straight Shank

CATALOG NUMBER	STK	DIMENSIONS								FIG.	INSERT	PARTS	
		D	R	L	L0	I1	I3	d	a°			Screw	Wrench
SWBS4035S42*	•	40	20	200	35	120	-	42	-	4	SWB240HMN (1) SWB240HSN (1)	TSW-614H (2)	T-25
SWBM4035S42	•	40	20	250	35	170	120	42	2°	4			
SWBSS4050S42	•	40	20	160	50	80	-	42	-	2	SWB240HMN (1) SWB240HSN (1) SPGA090304 (2)	TSW-614H (2) ESW-406 (2)	T-25 T-15
SWBS4050S42*	•	40	20	200	50	120	-	42	-	1			
SWBM4050S42*	•	40	20	250	50	150	120	42	2°30'	2			
SWBL4050S42	•	40	20	300	50	200	150	42	1°30'	2			
SWBE4050S42	•	40	20	350	50	200	150	42	1°30'	2			
SWB-40090-W40	•	40	20	175	50	90	-	40	-	3			
SWB-40115-W40	•	40	20	200	50	115	65	40	1°30'	3	SWB240HMN (1) SWB240HSN (1) SPGA090304 (2)	TSW-614H (2) ESW-406 (2)	T-25 T-15
SWBSS4050C508	•	40	20	160	50	80	60	50.8	18°	6			
SWBS4050C508*	•	40	20	200	50	120	100	50.8	18°	6			
SWBMS4050C508	•	40	20	220	50	140	120	50.8	18°	6			
SWBM4050C508*	•	40	20	250	50	170	150	50.8	18°	6			
SWBL4050C508	•	40	20	300	50	220	170	50.8	6°	6			
SWBE4050C508	•	40	20	350	50	270	170	50.8	3°	6			
SWB-40090-MT4	•	40	20	199	50	90	-	MT4	-	9			
SWB-40090-MT5	•	40	20	226	50	90	66.8	MT5	8°	9			
SWBS5060S42*	•	50	25	200	60	100	-	42	-	5			
SWBM5060S42*	•	50	25	250	60	100	-	42	-	5			
SWBL5060S42	•	50	25	300	60	150	-	42	-	5			
SWBE5060S42	•	50	25	350	60	150	-	42	-	5			
SWB-50100-W50	•	50	25	200	60	100	-	50	-	3			
SWB-50150-W50	•	50	25	250	60	150	-	50	-	3			
SWBSS5060C508	•	50	25	160	60	80	-	50.8	-	6			
SWBS5060C508*	•	50	25	200	60	120	-	50.8	-	6			
SWBMS5060C508*	•	50	25	220	60	140	-	50.8	-	6			
SWBM5060C508*	•	50	25	250	60	170	-	50.8	-	6			
SWBL5060C508	•	50	25	300	60	220	-	50.8	-	6			
SWBE5060C508	•	50	25	350	60	270	-	50.8	-	6			
SWBS5080C508*	•	50	25	200	80	120	-	50.8	-	7			
SWBM5080C508*	•	50	25	250	80	170	-	50.8	-	7			
SWBL5080C508*	•	50	25	300	80	220	-	50.8	-	7			
SWB-50100-MT5	•	50	25	236	60	100	-	MT5	-	9			
SWB-50120-MT5	•	50	25	256	60	120	-	MT5	-	9			
SWB-50150-MT5	•	50	25	286	60	150	-	MT5	-	9			
SWB-50170-MT5	•	50	25	306	60	170	-	MT5	-	9			
SWB-50200-BT50	•	50	25	339.8	60	200	150	BT50	-	8	SWB250HMN-N (1) SWB250HSN-N (1) IM-SP43GS (2)	HSW-614H (2) EXW-510 (2)	T-30 A-20
SWB-50250-BT50	•	50	25	339.8	60	250	200	BT50	-	8			

\*G-Body

Note: All cutters are supplied without inserts.